

DRINKING WATER PROTECTION SECTION ORGANIZATIONAL CHART



**Drinking Water Protection Section
Simplified Org Chart**
Minnesota Department of Health
Environmental Health Division

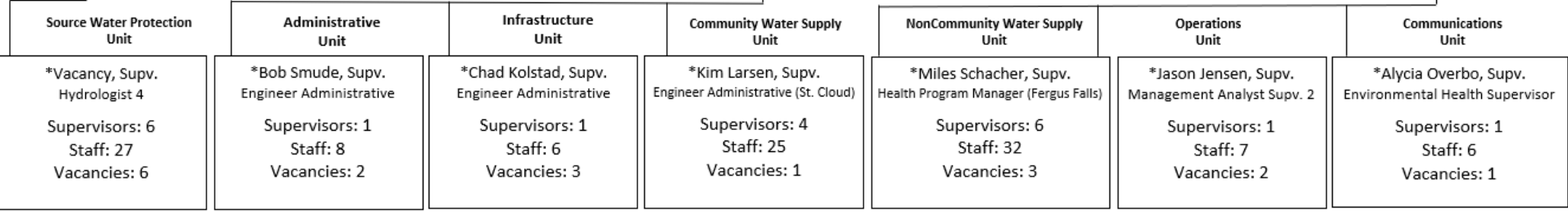
*Sandeep Burman, Section Manager
State Program Admin Manager Principal

*Steve Robertson, Asst. Manager
Health Program Manager Sr.

*Dave Hokanson, Asst. Manager
Health Program Manager Sr.

Infrastructure/ DWRP Coordination	Chief Engineer/ Technical Advisor
Supervisors: 0 Staff: 1 Vacancies: 0	Supervisors: 0 Staff: 1 Vacancies: 0

Compliance Advisor	Lead Coordination
Supervisors: 0 Staff: 1 Vacancies: 0	Supervisors: 0 Staff: 3 Vacancies: 0



*Manager or Supervisor
October 2024

DRINKING WATER PROTECTION SECTION ORGANIZATIONAL CHART



Drinking Water Protection Section
Full Org Chart
Minnesota Department of Health
Environmental Health Division

*Sandeep Burman, Section Manager
State Program Admin Manager Principal

Source Water Protection /
Hydrology Analysis

* Steve Robertson, Asst. Manager
Health Program Manager Sr.

Program Operations /
SDWA Implementation

*Dave Hokanson, Asst. Manager
Health Program Manager Sr.

Infrastructure/
DWRP Coordination
Todd Johnson
Engineer Administrative (Bemidji)

Chief Engineer/
Technical Advisor
Karla Peterson
Engineer Administrative

Compliance Advisor
Rochelle Steinbruckner
State Program Admin Coordinator

Lead Coordination
Anna Schliep
State Program Admin Prin

Caroline Olstad
State Program Admin Int

Blake Matti
State Program Admin

Source Water Protection
Unit
*VACANCY, Supv.
Hydrologist 4

Administrative
Unit
*Bob Smude, Supv.
Engineer Administrative

Infrastructure
Unit
*Chad Kolstad, Supv.
Engineer Administrative

Community Water Supply
Unit
*Kim Larsen, Supv.
Engineer Administrative (St Cloud)

NonCommunity Water Supply
Unit
*Miles Schacher, Supv.
Health Program Manager (Fergus Falls)

Operations
Unit
*Jason Jensen, Supv.
Management Analyst Supv. 2

Communications
Unit
*Alycia Overbo, Supv.
Environmental Health Supervisor

SWP Compliance Lead
Trudi Witkowski
State Prog. Admin Principal

Monitoring, Analysis, Data
*Jane de Lambert
Environmental Health Supv.

Mary Coburn
Environmental Specialist 4

Maya Gilchrist
Hydrologist 3

Arianna Giorgi
Public Health Sanitarian 2

Shelby Kassuelke
Hydrologist 2

Seamus McMurrer
Student Worker

Kira Silvers
Environmental Specialist 4

Sydney Waldrop
Student Worker

VACANCY
Env Research Scientist

North Region Planners
Bemidji
*Jenilynn Marchand
Planning Program Supv.

Chris Parthun
Planner Principal State

Duluth
Cindy Hakala
Planner Principal State

Fergus Falls
Dan Disrud
Planner Principal State

St Cloud
Chad Anderson
Planner Principal State

South Region Planners
St. Cloud
*Mark Wettlaufer
Planning Program Supv.

Marshall
Amanda Strommer
Planner Principal State

Rochester
Scott Hanson
Planner Principal State

St. Paul
Carrie Raber
Planning Director State

Dereck Richter
State Prog Admin Coordinator

Abby Shea
Planner Principal State

Modeling & Aquifer Analysis
*VACANCY
Hydrologist Supv.

TJ (Trent) Farnum
Research Scientist 3

Danielle Nielsen
Hydrologist 3

John Oswald
Research Scientist 3

VACANCY
Hydrologist 2/3

VACANCY
Hydrologist 2/3

Planner

WHP Hydrologists
*John Woodside
Hydrologist Supv.

Nick Budde
Hydrologist 2

Yarta Clemens-Billaigbakpu
Hydrologist 3

Gail Haglund
Hydrologist 3

Lauren Larkin
Hydrologist 3

Anneka Munsell
Hydrologist 3s

Luke Pickman
Hydrologist 3

Compliance/Grants
Erin Harris
Grants Specialist Sr.

Anita Smith
Grants Specialist Sr.

Sabrina Sutter
Grants Specialist Sr.

Eddie Wojski
Grants Specialist Sr.

Data Management
Angie Kane
Management Analyst 4

VACANCY
Management Analyst 2

VACANCY
Management Analyst 2

Education/Training
Stew Thornley
Comm Specialist 3

Lead Worker

Sue Lang
Management Analyst 2

Engineering
David Weum
Engineer Principal

VACANCY
Plan Review Engineer

Plan Review

Alex Bartley
Engineer Grad. 2

Dylan Heise
Engineer Grad. 1

Jessie Kolar
CEC Engineer

Corey Mathisen
Engineer Principal

Sara Mollamohammada
Engineer Grad. 2

Jack Smude
Engineering Aide

VACANCY
Capacity Development Coordinator

VACANCY
Environmental Review Spec

VACANCY
Plan Review

Plan Review

Plan Review

Plan Review

Plan Review

North Operations
Fergus Falls
*Lucas Hoffman
Engineer Principal, Supv.

Brady Krueger
Engineer Specialist Sr

Bemidji
Eric Weller
Engineer Grad. 2

Duluth
Jenny Showers
Engineer Grad. 2

St. Cloud
Hunter Blommer
Engineer Grad. 2

Collin Fetters
Engineer Grad. 1

Compliance
Dave Vaaler
State Prog. Admin Principal
Compliance Coordinator

Allison Dodge
State Prog Admin Sr.

Nancy Kadrlik
Health Prog. Rep.

Micailleigh McBride
State Prog Admin Sr.

Samantha Miltz
State Prog Admin Int.

Stephanie Voeller
State Prog Admin Sr.

State Prog Admin Sr.

South Operations
Mankato
*Amy Lynch
Engineer Principal, Supv.

Peyton Carroll
Engineer Grad. 1

Hannah Neighbor
Engineer Grad. 2

Rochester
Kate Novy
Engineer Grad. 2

St. Paul
Andrew Karp
Engineer Grad. 2

Lucas Martin
Engineer Principal

Brian Noma
Engineer Principal

Metro Operations
*Corey Larson
Engineer Principal, Supv.

Jackie Becker
State Prog Admin Int

Indran Kamalanathan
Engineer Grad. 2

Hannah Mendez
Engineer Grad. 2

Haripriya Naidu
State Program Admin Sr

State Program Admin Sr

North Operations
Duluth
*James Backstrom
Environmental Health Supv.

Delegation/Training
Kyle Johnsen
Planner Principal State

CEC Sanitarian
Brenda Eschenbacher
PH Sanitarian 3

Sanitarians
Duluth
Kilen Klimek
PH Sanitarian 1

Cordell Manz
PH Sanitarian 3

Larry Peterson
PH Sanitarian 3

Cody Tennant
PH Sanitarian 3

Sanitarians
Bemidji
*Ty Riihiluoma
PH Sanitarian Supv.

Ed Aletto
PH Sanitarian 3

Scott Gullicksrud
PH Sanitarian 3

Steve Lindgren
PH Sanitarian 3

Josh Zellman
PH Sanitarian 1

Ferus Falls
Jill DeBrito
PH Sanitarian 3

Mike Hargiss
PH Sanitarian 2

Tony Mariotti
PH Sanitarian 2

South Operations
St. Cloud
*Eric Freihammer
Environmental Health Supv.

Sanitarians
St. Cloud
Tasha Henrikson
PH Sanitarian 2

Ernie Jorgensen
PH Sanitarian 2

Kent Johnson
PH Sanitarian 3

Gretchen Kern
PH Sanitarian 2

Tyler Schacher
PH Sanitarian 2

Sanitarians
St. Paul
*Dane Huber
PH Sanitarian Supv.

Kathryn Bradley
PH Sanitarian 2

Zeke Etukudo
PH Sanitarian 3

Mankato
Dave Russell
PH Sanitarian 2

Ashley Berberich
PH Sanitarian 2

Marshall
Joyce Hedlin
PH Sanitarian 3

Dave Distad
PH Sanitarian 2

Rochester
Tim Hugley
PH Sanitarian 3

Scott Jensen
PH Sanitarian 2

Engineers
Duluth
*Anita Anderson
Engineer Principal, Supv.

Nate Karp
Engineer Senior

St. Paul
John Galt
Engineer Senior

Adam Luthin
Engineer Grad. 2

Compliance
VACANCY
State Prog. Admin Principal
Compliance Coordinator

Cody Bahr
PH Sanitarian 2

Maya Grantier
PH Sanitarian 2

Bree Landherr
PH Sanitarian 2

Hannah Worley
PH Sanitarian 2

VACANCY
PH Sanitarian 1/2

VACANCY
PH Sanitarian 1/2

PH Sanitarian 1/2

PH Sanitarian 1/2

Brett Leske
Management Analyst 1
Lead Worker

Erin Culver
Management Analyst 1

Noel Hansen
State Program Admin Int.

Juanita Hinrichsen
OAS Int.

Jaz Kelm
Management Analyst 1

Mark Kluhsman
OAS Sr.

Lucy Maghrak
OAS Sr.

VACANCY
OAS

VACANCY
Management Analyst 1

Management Analyst 1

Management Analyst 1

Management Analyst 1

Management Analyst 1

Zhanna Dunagan
Comm Specialist

Alvine Laure Ekame
Planner Principal State

Johanna Hayden
Comm Specialist 3

Kylie Jacobsen
Planner Principal State

Rebecca Toews
Comm Specialist 3

Leslie Winter
Comm Specialist 2

VACANCY
Student Worker Para Prof

VACANCY
Planner

Planner

Planner

Planner

Planner

Planner

*Manager or Supervisor
Positions in St Paul unless otherwise notated
October 2024

Drinking Water Protection Section

Organizational Chart

This is the organizational chart for the Drinking Water Protection Section in the Environmental Health Division of the Minnesota Department of Health.

Manager's Office

*Sandeep Burman, State Program Admin Manager Principal, is the Section Manager, with the assistant section manager and three of the unit supervisors reporting directly to him; as well as Karla Peterson, Engineer Administrative; and Todd Johnson, Engineer Administrative (Bemidji).

*Dave Hokanson, Health Program Manager Senior, is an Assistant Section Manager, with three of the unit supervisors reporting directly to him; as well as Rochelle Steinbruckner, State Program Admin Coordinator; Anna Schliep, State Program Admin Principal; Caroline Olstad, State Program Admin Intermediate; and Blake Matti, State Program Admin.

*Steve Robertson, Health Program Manager Senior, is an Assistant Section Manager, with one unit supervisor reporting directly to them.

The section consists of seven units and 138 total staff.

Source Water Protection Unit

The first unit is the Source Water Protection Unit, comprised of 31 total staff, unit supervisor is

*Vacancy, Hydrologist 4. Five region supervisors and 1 direct staff report to Vacancy.

SWP Compliance Lead:

- Trudi Witkowski, State Program Admin Principal

Monitoring, Analysis, Data:

- *Jane de Lambert, Environmental Health Supervisor
- Mary Coburn, Environmental Specialist 4
- Maya Gilchrist, Hydrologist 3
- Arianna Giorgi, Public Health Sanitarian 2
- Shelby Kassuelke, Hydrologist 2
- Seamus McMurrer, Student Worker
- Kira Silvers, Environmental Specialist 4
- Sydney Waldrop, Student Worker
- Vacancy, Environmental Research Scientist

Modeling & Aquifer Analysis:

- *Vacancy, Hydrologist Supervisor
- TJ (Trent) Farnum, Research Scientist 3
- Danielle Nielsen, Hydrologist 3
- John Oswald, Research Scientist 3
- Vacancy, Hydrologist 2/3
- Vacancy, Hydrologist 2/3
- Vacancy, Planner

WHP (Wellhead Protection) Hydrologists:

- *John Woodside, Hydrologist Supervisor
- Nick Budde, Hydrologist 2
- Yarta Clemens-Billaigbakpu, Hydrologist 3
- Gail Haglund, Hydrologist 3
- Lauren Larkin, Hydrologist 3
- Anneka Munsell, Hydrologist 3
- Luke Pickman, Hydrologist 3

North Region Planners:

- *Jenilynn Marchand, Planning Program Supervisor (Bemidji)
- Chad Anderson, Planner Principal State (St. Cloud)
- Dan Disrud, Planner Principal State (Fergus Falls)
- Cindy Hakala, Planner Principal State (Duluth)
- Chris Parthun, Planner Principal State (Bemidji)

South Region Planners:

- *Mark Wettlaufer, Planning Program Supervisor (St. Cloud)
- Scott Hanson, Planner Principal State (Rochester)
- Carrie Raber, Planning Director State
- Dereck Richter, State Program Administrator Coordinator
- Abby Shea, Planner Principal State
- Amanda Strommer, Planner Principal State (Marshall)

Community Water Supply Unit

The second unit is the Community Water Supply Unit, comprised of 29 total staff, unit supervisor is *Kim Larsen, Engineer Administrative. Three supervisors and 6 direct staff report to Kim.

St. Paul (regional)

- Dave Vaaler, State Program Admin Principal, Compliance Coordinator
- Allison Dodge, State Program Administrator Senior
- Nancy Kadrlík, Health Program Representative
- Micaileigh McBride, State Program Administrator Senior
- Samantha Miltz, State Program Administrator Intermediate
- Stephanie Voeller, State Program Administrator Senior

North Operations

- *Lucas Hoffman, Engineer Principal Supervisor (Fergus Falls)
- Hunter Blommer, Engineer Graduate 1 (St. Cloud)
- Collin Fetters, Engineer Graduate 1 (St. Cloud)
- Brady Krueger, Engineer Specialist Senior (Fergus Falls)
- Jennifer Showers, Engineer Graduate 2 (Duluth)
- Eric Weller, Engineer Graduate 2 (Bemidji)

South Operations

- *Amy Lynch, Engineer Principal Supervisor (Mankato)
- Peyton Carroll, Engineer Graduate 1
- Andrew Karp, Engineer Graduate 2
- Lucas Martin, Engineer Principal
- Hannah Neighbor, Engineer Graduate 2
- Brian Noma, Engineer Principal
- Kate Novy, Engineer Graduate 2 (Rochester)

Metro Operations

- *Corey Larson, Engineer Principal Supervisor
- Jackie Becker, State Program Administrator Intermediate
- Indran Kamalanathan, Engineer Graduate 2
- Hannah Mendez, Engineer Graduate 2
- Haripriya Naidu, State Program Administrator Senior
- David Rindal, Engineer Principal
- Brain Rivers, Engineer Graduate 2
- Maria Spitael, Engineer Graduate 2
- Sam Swanson, Engineer Graduate 2
- Vacancy, Engineer Graduate 1/2

Noncommunity Water Supply Unit

The third unit is the Noncommunity Water Supply Unit, comprised of 38 total staff, unit supervisor is *Miles Schacher, Health Program Manager. Three region supervisors and 6 direct staff report to Miles.

Compliance

- Vacancy, State Program Admin Principal, Compliance Coordinator
- Cody Bahr, Public Health Sanitarian 2
- Bree Landherr, Public Health Sanitarian 2
- Hannah Worley, Public Health Sanitarian 2
- Vacancy, Public Health Sanitarian 1/2
- Vacancy, Public Health Sanitarian 1/2

Engineers

- *Anita Anderson, Engineer Principal Supervisor (Duluth)
- John Galt, Engineer Senior
- Nate Karp, Engineer Senior (Duluth)
- Adam Luthin, Engineer Graduate 2

North Operations Supervisor

- *James Backstrom, Environmental Health Supervisor (Duluth)

Delegation/Training

- Kyle Johnsen, Planner Principal State

CEC Sanitarian

- Brenda Eschenbacher, Public Health Sanitarian 3

Sanitarians

- Kilen Klimek, Public Health Sanitarian 1 (Duluth)
- Cordell Manz, Public Health Sanitarian 3 (Duluth)
- Larry Peterson, Public Health Sanitarian 3 (Duluth)
- Cody Tennant, Public Health Sanitarian 3 (Duluth)

Sanitarians

- *Ty Riihiluoma, Public Health Sanitarian Supervisor (Bemidji)
- Ed Aletto, Public Health Sanitarian 3 (Bemidji)
- Jill DeBrito, Public Health Sanitarian 3 (Fergus Falls)
- Scott Gullicksrud, Public Health Sanitarian 3 (Bemidji)
- Mike Hargiss, Public Health Sanitarian 2 (Fergus Falls)
- Steven Lindgren, Public Health Sanitarian 3 (Bemidji)
- Tony Mariotti, Public Health Sanitarian 2 (Fergus Falls)
- Josh Zellman, Public Health Sanitarian 1 (Bemidji)

South Operations Supervisor

- *Eric Freihammer, Environmental Health Supervisor (St. Cloud)

Sanitarians

- Tasha Henrikson, Public Health Sanitarian 2 (St. Cloud)
- Kent Johnson, Public Health Sanitarian 3 (St. Cloud)
- Ernie Jorgensen, Public Health Sanitarian 2 (St. Cloud)
- Gretchen Kern, Public Health Sanitarian 2 (St. Cloud)
- Tyler Schacher, Public Health Sanitarian 2 (St. Cloud)

Sanitarians

- *Dane Huber, Public Health Sanitarian Supervisor
- Ashley Berberich, Public Health Sanitarian 2 (Mankato)
- Kathryn Bradley, Public Health Sanitarian 2
- Dave Distad, Public Health Sanitarian 2 (Marshall)
- Zeke Etukudo, Public Health Sanitarian 3
- Joyce Hedlin, Public Health Sanitarian 3 (Marshall)
- Tim Hugley, Public Health Sanitarian 3 (Rochester)
- Scott Jensen, Public Health Sanitarian 2 (Rochester)
- Dave Russell, Public Health Sanitarian 2 (Mankato)

Administrative Unit

The fourth unit is the Administrative Unit, comprised of 9 total staff, unit supervisor is *Bob Smude, Engineer Administrative. All unit staff report directly to Bob.

Education/Training:

- Stew Thornley, Communications Specialist 3, Lead Worker
- Sue Lang, Management Analyst 2

Data Management:

- Angie Kane, Management Analyst 4
- Vacancy, Management Analyst 2
- Vacancy, Management Analyst 2

Compliance/Grants:

- Erin Harris, Grants Specialist Senior
- Anita Smith, Grants Specialist Senior
- Sabrina Sutter, Grants Specialist Senior
- Eddie Wojski, Grants Specialist Senior

Engineering:

- David Weum, Engineer Principal
- Vacancy, Plan Review Engineer

Operations Unit

The fifth unit is the Operations Unit, comprised of 8 total staff - unit supervisor is *Jason Jensen, Management Analyst Supervisor 2. All unit staff report directly to Jason.

St. Paul

- Brett Leske, Management Analyst 1, Lead Worker
- Erin Culver, Management Analyst 1
- Noel Hansen, State Program Administrator Intermediate
- Juanita Hinrichsen, Office & Administrative Specialist Intermediate
- Jaz Kelm, Management Analyst 1
- Mark Kluhsman, Office & Administrative Specialist Senior
- Lucy Maghrak, Office & Administrative Specialist Senior
- Vacancy, Office & Administrative Specialist
- Vacancy, Management Analyst 1

Infrastructure Unit

The sixth unit is the Infrastructure Unit, comprised of 7 total staff - unit supervisor is *Chad Kolstad, Engineer Administrative. All unit staff report directly to Chad.

St. Paul

- Alex Bartley, Engineer Graduate 2
- Dylan Heise, Engineer Graduate 1
- Jessie Kolar, CEC Engineer
- Corey Mathisen, Engineer Principal
- Sara Mollamohammada, Engineer Graduate 2
- Jack Smude, Engineering Aide
- Vacancy, Capacity Development Coordinator
- Vacancy, Environmental Review Spec
- Vacancy, Plan Review

Communications

The seventh unit is the Communications Unit, comprised of 7 total staff - unit supervisor is *Alycia Overbo, Environmental Health Supervisor. All unit staff report directly to Alycia.

St. Paul

- Zhanna Dunagan, Communications Specialist
- Alvine Laure Ekame, Planner Principal State
- Johanna Hayden, Communications Specialist 3
- Kylie Jacobsen, Planner Principal State
- Rebecca Toews, Communications Specialist 3
- Leslie Winter, Communications Specialist 2
- Vacancy, Student Worker Para Prof
- Vacancy, Planner

Minnesota Department of Health
Drinking Water Protection
Street address
PO Box 64975
St. Paul, MN 55164-0975
651-201-4700
www.health.state.mn.us

To obtain this information in a different format, call: 651-201-4700.

*Manager or Supervisor

Positions located in St. Paul unless otherwise notated.

October 2024