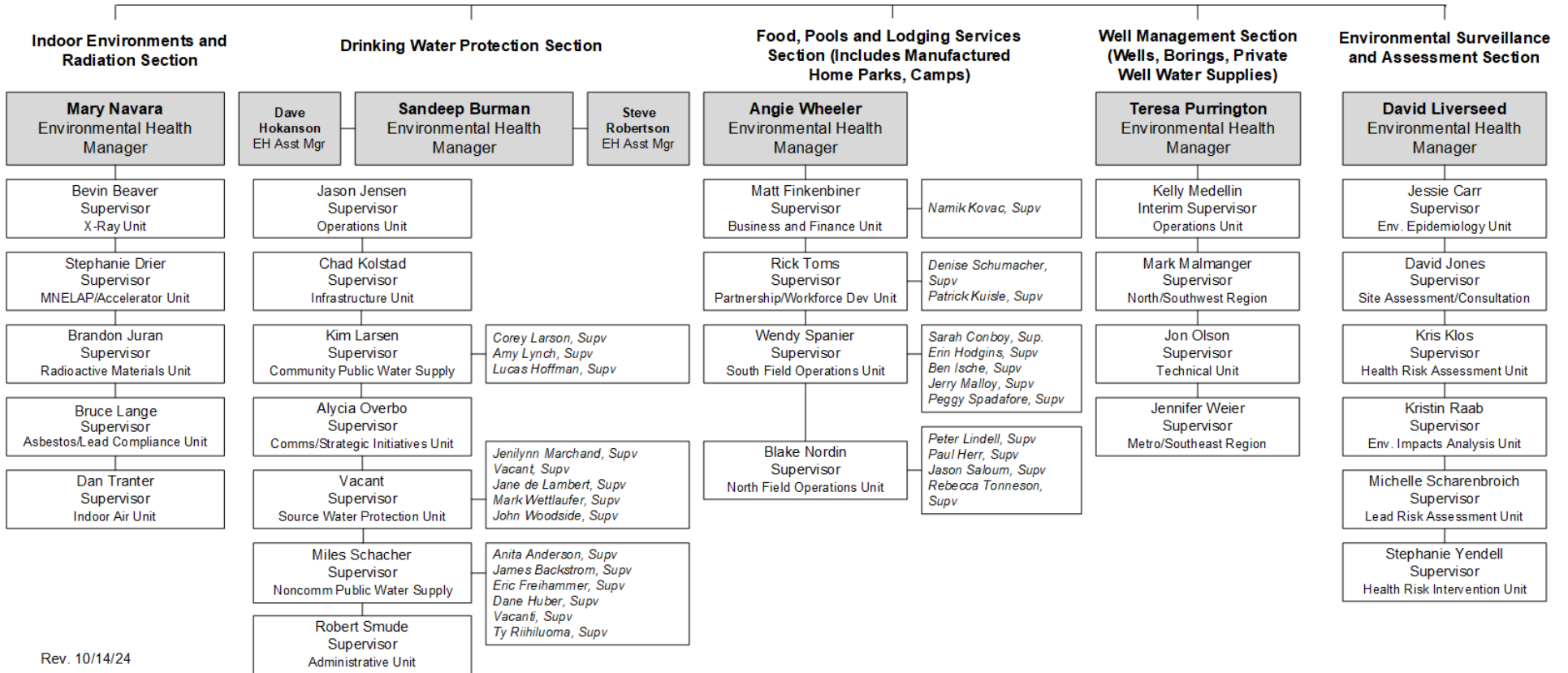
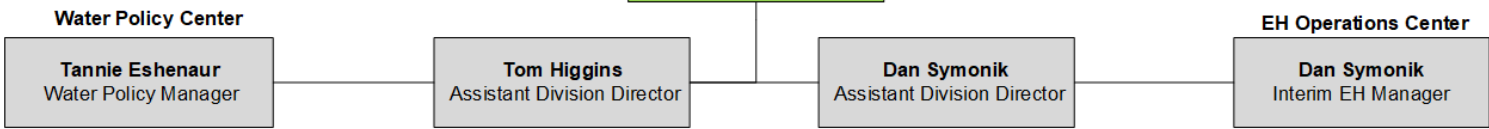


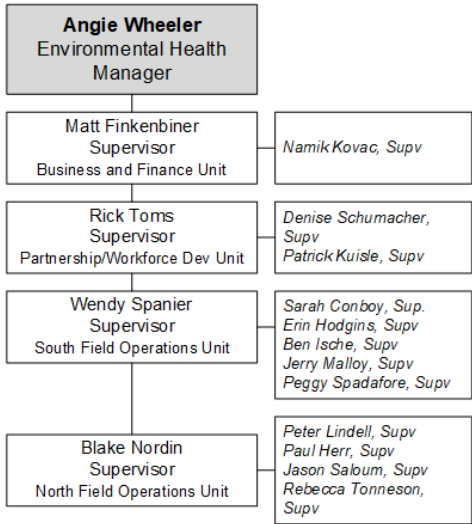


Environmental Health Division
Minnesota Department of Health

Tom Hogan
Division Director



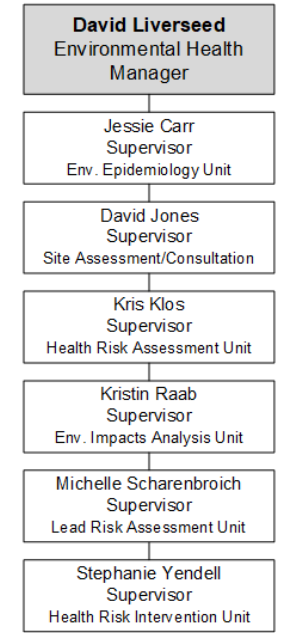
Food, Pools and Lodging Services Section (Includes Manufactured Home Parks, Camps)



Well Management Section (Wells, Borings, Private Well Water Supplies)



Environmental Surveillance and Assessment Section



Environmental Health Division Organizational Chart

This is the organizational chart for the Environmental Health Division leadership in the Minnesota Department of Health.

Director's Office

Tom Hogan is the Division Director. Five section managers and the Water Policy Center manager report directly to Tom Hogan. Dan Symonik is an Assistant Division Director and managing the EH Operations Center. Tom Higgins is an Assistant Division Director.

Drinking Water Protection Section

Sandeep Burman, Environmental Health Manager, supervises the Drinking Water Protection Section. Dave Hokanson and Steve Robertson are the Assistant Environmental Health Managers. Seven-unit supervisors report directly to them.

1. Miles Schacher, Supervisor, Noncommunity Public Water Supply Unit, supervises five program supervisors:
 - Anita Anderson, Supervisor
 - James Backstrom, Supervisor
 - Eric Freihammer, Supervisor
 - Dane Huber, Supervisor
 - Vacant, Supervisor
 - Ty Riihiluoma, Supervisor
2. Alycia Overbo, Supervisor, Comm/Strategic Initiatives Unit
3. Jason Jensen, Supervisor, Operations Unit
4. Kim Larsen, Supervisor, Community Public Water Supply Unit, supervises three program supervisors:
 - Corey Larson, Supervisor
 - Amy Lynch, Supervisor
 - Lucas Hoffman, Supervisor
5. Vacant, Supervisor, Source Water Protection Unit, supervises five program supervisors:
 - Jane de Lambert, Supervisor
 - Jenilynn Marchand, Supervisor
 - Vacant, Supervisor
 - Mark Wettlaufer, Supervisor
 - John Woodside, Supervisor
6. Robert Smude, Supervisor, Administrative Unit
7. Chad Kolstad, Supervisor, Infrastructure Unit

EH Operations Center

Dan Symonik, Assistant Division Director, supervises the EH Operations Center.

Environmental Surveillance and Assessment Section

David Liverseed, Environmental Health Manager, supervises the Environmental Surveillance and Assessment Section. Six-unit supervisors report directly to the section manager.

1. Jessie Carr, Supervisor, Environmental Epidemiology Unit
2. David Jones, Supervisor, Site Assessment and Consultation Unit
3. Kris Klos, Supervisor, Health Risk Assessment Unit
4. Kristin Raab, Supervisor, Environmental Impact Analysis Unit
5. Michelle Scharenbroich, Supervisor, Lead Risk Assessment Unit
6. Stephanie Yendell, Supervisor, Health Risk Intervention Unit

Food, Pools and Lodging Services Section (includes Manufactured Home Parks, Camps)

Angie Wheeler, Environmental Health Manager, supervises the Food, Pools and Lodging Services Section (includes Manufactured Home Parks, Camps). Four-unit supervisors report directly to the section manager.

1. Matt Finkenbiner, Supervisor, Business and Finance Unit supervises one program supervisor:
 - Namik Kovac, Supervisor
2. Rick Toms, Supervisor, Partnership and Workforce Development Unit supervises one program supervisor:
 - Denise Schumacher, Supervisor
 - Patrick Kuisle, Supervisor
3. Wendy Spanier, Supervisor, South Field Operations, supervises five program supervisors:
 - Sarah Conboy, Supervisor
 - Erin Hodgins, Supervisor
 - Ben Ische, Supervisor
 - Jerry Malloy, Supervisor
 - Peggy Spadafore, Supervisor
4. Blake Nordin, Supervisor, North Field Operations, supervises four program supervisors:
 - Peter Lindell, Supervisor
 - Paul Herr, Supervisor
 - Jason Saloum, Supervisor
 - Rebecca Tonneson, Supervisor

Indoor Environments and Radiation Section

Mary Navara, Environmental Health Manager, supervises the Indoor Environments and Radiation Section. Five-unit supervisors report directly to the section manager.

1. Bevin Beaver, Supervisor, X-Ray Unit
2. Stephanie Drier, Supervisor, MNELAP/Accelerator Unit
3. Brandon Juran, Supervisor, Radioactive Materials Unit
4. Bruce Lange, Supervisor, Asbestos and Lead Compliance Unit
5. Dan Tranter, Supervisor, Indoor Air Unit

Water Policy Center

Tannie Eshenaur, Water Policy Manager, supervises the Water Policy Center.

Well Management Section (wells, borings, private well water supplies)

Teresa Purrington, Environmental Health Manager, supervises the Well Management Section (wells, borings, and private well water supplies). Two-unit supervisors and two regional supervisors report directly to the section manager.

1. Kelly Medellin, Interim Supervisor, Operations Unit
2. Mark Malmanger, Supervisor, North/Southwest Region
3. Jon Olson, Supervisor, Technical Unit
4. Jennifer Weier, Supervisor, Metro/Southeast Region

Minnesota Department of Health
Environmental Health Division
PO Box 64975
St. Paul, MN 55164-0975
651-201-4571
www.health.state.mn.us

Rev. 10/14/24

To obtain this information in a different format, call: 651-201-4500.