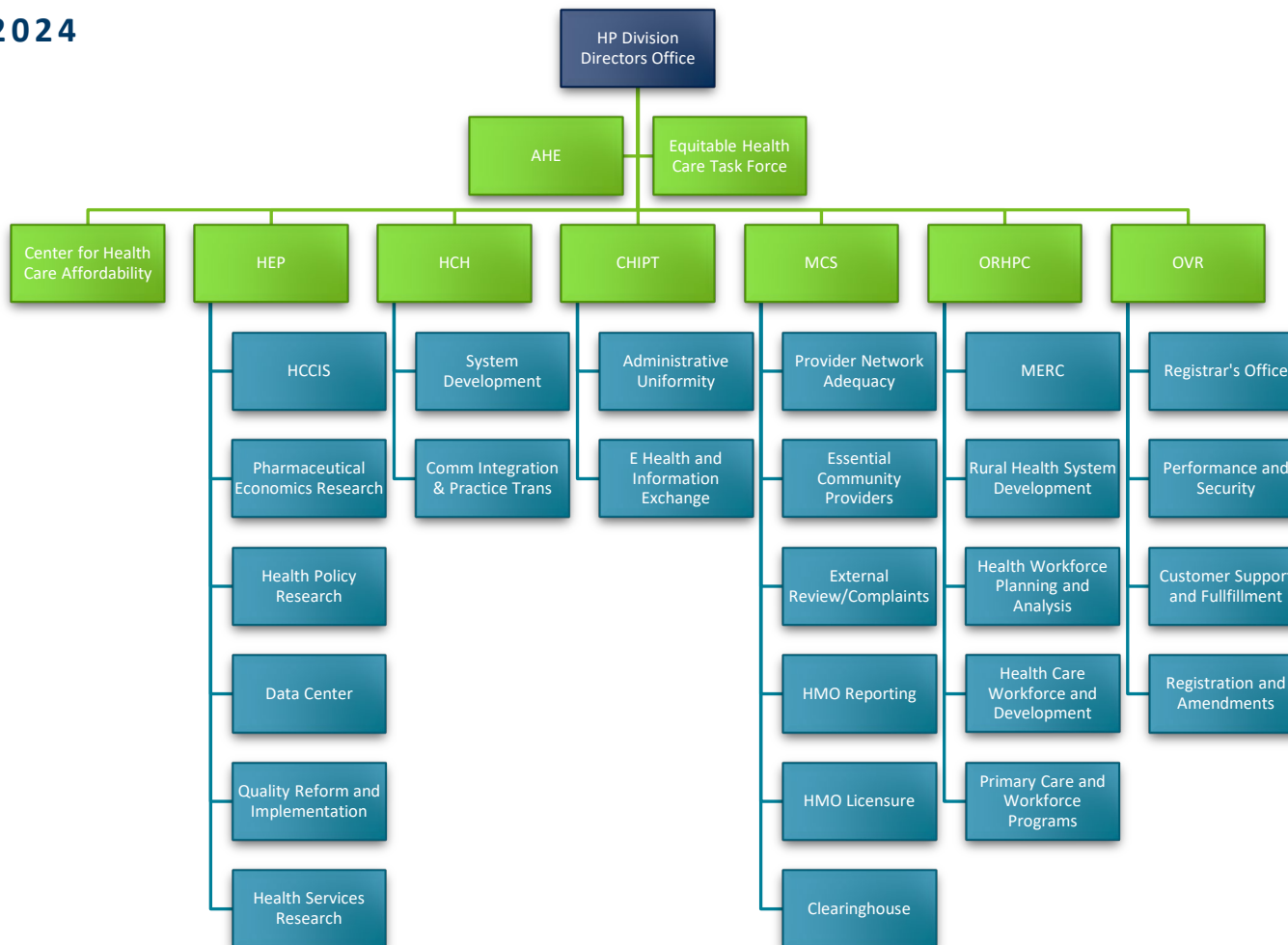


# Health Policy Division Staff and Organization List

OCTOBER 23, 2024



**Table of Contents**

Health Policy Division Staff and Organization List ..... 1

- Division Director’s Office ..... 2
- Adverse Events Reporting (AHE) ..... 2
- Equitable Health Care Task Force ..... 2
- Center for Health Information Policy and Transformation (CHIPT) ..... 2
  - Administrative Uniformity..... 2
  - E Health and Health Information Exchange ..... 2
- Center for Health Care Affordability..... 2
- Health Care Homes (HCH) ..... 3
  - System Development ..... 3
  - Community Integration and Practice Transformation ..... 3
- Health Economics Program (HEP)..... 3
  - Minnesota Health Care Cost Information System (HCCIS)..... 3
  - Pharmaceutical Economics Research ..... 3
  - Health Policy Research ..... 4
  - Data Center ..... 4
  - Quality Reform Implementation ..... 4
  - Health Services Research ..... 4
- Managed Care Systems (MCS)..... 4
  - Clearinghouse..... 5
- Office of Rural Health and Primary Care (ORHPC)..... 5
  - MERC (Health Care Workforce and Education)..... 5
  - Rural Health System Development/Trauma ..... 5
  - Health Workforce Planning and Analysis ..... 5
  - Health Care Workforce and Development..... 6
  - Primary Care and Workforce Programs ..... 6
- Office of Vital Records (OVR)..... 7
  - Registrar’s Office ..... 7
  - Performance and Security..... 7
  - Customer Support and Fulfillment..... 7
  - Registration and Fulfillment ..... 8
- Health Policy MN.IT Services ..... 8

## Division Director's Office

- **Division Director:** Diane Rydrych
- **Assistant Division Director:** Susan Castellano
  - **Health Policy Specialist:** Tara Borton
  - **Financial Management:** Barb Fischer
  - **Information and Communications Coordinator:** Morgan (Foster) Powers

## Adverse Events Reporting (AHE)

- **Program Director:** Rachel Jokela

## Equitable Health Care Task Force

- **Reports to:** Division Director's Office
  - Denise McCabe
  - Julia Stumpf

## Center for Health Information Policy and Transformation (CHIPT)

- **Program Manager:** Jennifer Fritz
  - Susie Blake
  - Sarah Shaw

## Administrative Uniformity

- **Supervisor:** Jennifer Fritz
  - Dave Haugen

## E Health and Health Information Exchange

- **Supervisor:** Karen Soderberg
  - Bilqis Amatus-Salaam
  - Kari Guida
  - Anne Schloegel

## Center for Health Care Affordability

- **Supervisor:** Vacant
  - Vacant

## Health Care Homes (HCH)

- **Program Manager:** David Kurtzon

## System Development

- **Supervisor:** Tina Peters
  - Georgia Anderson
  - Lisa Behr
  - Heidi Carlson
  - Joan Kindt
  - Jennifer Strickland

## Community Integration and Practice Transformation

- **Supervisor:** Rosemarie Rodriguez-Hager
  - Sadie Anderson
  - Dorothy Hull
  - Catherine Johnson

## Health Economics Program (HEP)

- **Program Director:** Stefan Gildemeister
- **Program Deputy Director:** Cara Bailey
  - Kristen Ackert
  - Diane Hammond
  - Kelsey Schaenzer
  - Joseph Lee

## Minnesota Health Care Cost Information System (HCCIS)

- **Supervisor:** Cara Bailey
  - Tracy Johnson

## Pharmaceutical Economics Research

- **Supervisor:** Annelisa Steeber
  - Margaret Abraham-Kaz (Contractor)
  - Margaret Darling
  - Sean MacDonell
  - Caitlin Pohl (Contractor)

- David Raatz
- Madison Stangl
- Abby Vogel

## Health Policy Research

- **Supervisor:** Vacant (Stefan Gildemeister and Cara Bailey)
  - Nathan Hierlmaier
  - Marco Morales
  - Renee Saarela
  - Michelle Wilson
  - Rachel Wittkopp, *Student Worker*

## Data Center

- **Supervisor:** Karl Fenstrom
  - Michael Adams
  - Beth Bowerman
  - Erinn Sanstead

## Quality Reform Implementation

- **Supervisor:** Denise McCabe
  - Rachel Cahoon
  - Sarah Evans
  - David Hesse
  - Kelsey Kannenberg

## Health Services Research

- **Director:** Pam Mink
  - Michael Burian
  - Beth Egan
  - Astrid Knott
  - Ben Nicla

## Managed Care Systems (MCS)

- **Program Manager:** Julie Erickson
- **Assistant Program Manager:** Alisha Simon

## HEALTH POLICY STAFF

- William (Bill) Christjaener
- Sara Dufour
- Andrea Ecklund
- Dena Harrell
- Mekibib Hirpo
- Eric Holland
- Kirsten Peterson
- Michelle Stein
- Brenda Sorvig
- Mary Timm

### Clearinghouse

- Cheryl Jacobson

## Office of Rural Health and Primary Care (ORHPC)

- **Program Manager:** Zora Radosevich
  - Vacant

### MERC (Health Care Workforce and Education)

- **Supervisor:** Zora Radosevich
  - Diane Reger

### Rural Health System Development/Trauma

- **Deputy Director:** Tim Held
  - Emma Distel
  - Maria Flor
  - LynMarie Harris
  - Tamika Howard, *Contractor*
  - Tammy Peterson
  - Gina Vue
  - Grace Liu, *student worker*
  - Olivia Houck
  - Dee Telkamp

### Health Workforce Planning and Analysis

- **Supervisor:** Nitika Moibi
  - Kelsey Besse
  - Teri Fritsma
  - Valerie Stofferahn
  - Megan Loew
  - Madison Weirick

## Health Care Workforce and Development

- **Supervisor:** Ann Linde
  - Siham Abdellah
  - Roble Aden
  - Robin Bly
  - Zoe Hill
  - Tarissa Host
  - Melanie Innes
  - Erik Larson
  - Joanne Madrid
  - Renee Richie
  - Samantha Rowbottom

## Primary Care and Workforce Programs

- **Supervisor:** Laura Sutter
  - Rebekah Ehlebracht
  - Elizabeth Fenske
  - Brenda Flattum
  - Katie Hentges
  - Janet Howard
  - Daniel Merkl
  - Therese Nett
  - Liza Root, *contractor*
  - Sarah Grafstrom
  - Mai La Ong Vang
  - Gao Nue Xiong

## Office of Vital Records (OVR)

- **Program Manager:** Molly Crawford

### Registrar's Office

**Supervisor:** Molly Crawford

- Mary L Connor
- Heidi Granlund
- Dylan Slivik
- Sarah Ryan
- Shonda Wright

### Performance and Security

- **Supervisor:** Anne Kleppe
  - Sally Almond
  - Nancy Bollman
  - Melanie Charpentier
  - Cheri Denardo
  - Justin Maine
  - Carl Haydel

### Customer Support and Fulfillment

- **Supervisor:** Bill Devine
  - Jose Andrade
  - Michael DeBough
  - Shelly Eichenlaub
  - Michael Fanslow
  - Jesse Govaert
  - Kathleen Hiera
  - James Kasal
  - Sharon Mitchell
  - John Mogren
  - Seth Nesting
  - Mary Roguski
  - Hailey Studer



- Gretchen Younger

## Registration and Fulfillment

- **Supervisor:** Krista Bauer
  - Lead: Maria Schaff
  - James Andre
  - Jean Cocchiarella
  - Kimberly Dodge
  - Aura Mendoza Albuquerque
  - Jean Garman
  - Maureen Sheehy-Kustaa

## Health Policy MN.IT Services

- **Supervisor:** Rohit Saxena
  - Trung Nguyen
  - Jason Tillman
  - Doug Wheeler
  - Tony Yang
  - Hung Nguyen
  - Yang Yang

Minnesota Department of Health  
Health Policy Division  
PO Box 64975  
St. Paul, MN 55164-0975  
[www.health.state.mn.us](http://www.health.state.mn.us)

To obtain this information in a different format, call: 651-201-3560