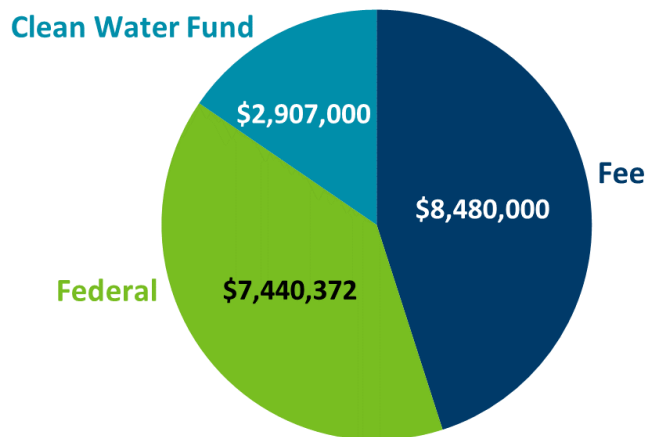


# How the Safe Drinking Water Fee supports Drinking Water Protection efforts

## Total budget for the Drinking Water Protection program

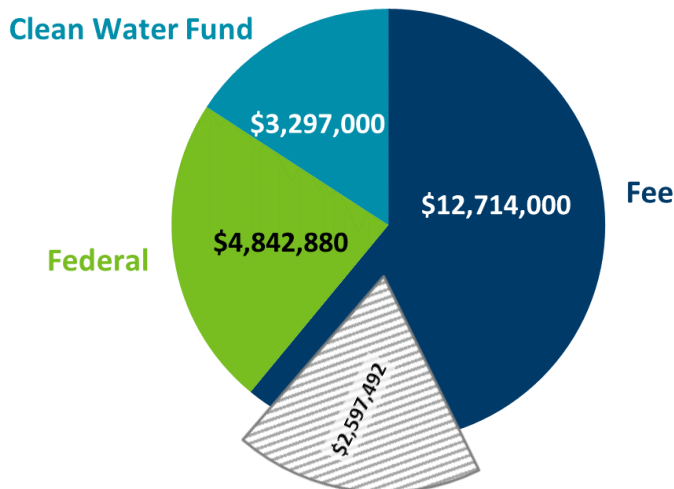
- The increase in the Safe Drinking Water Fee restores funding to the Drinking Water Revolving Fund (DWRf) for drinking water infrastructure projects. Moving 25 current staff from DWRf as a funding source to the fee as a funding source restores about \$3 million to DWRf.
- The fee increase has also expanded our capacity to provide expert assistance to public water suppliers through the addition of three new staff.

### Total budget: \$18.8 million before fee increase



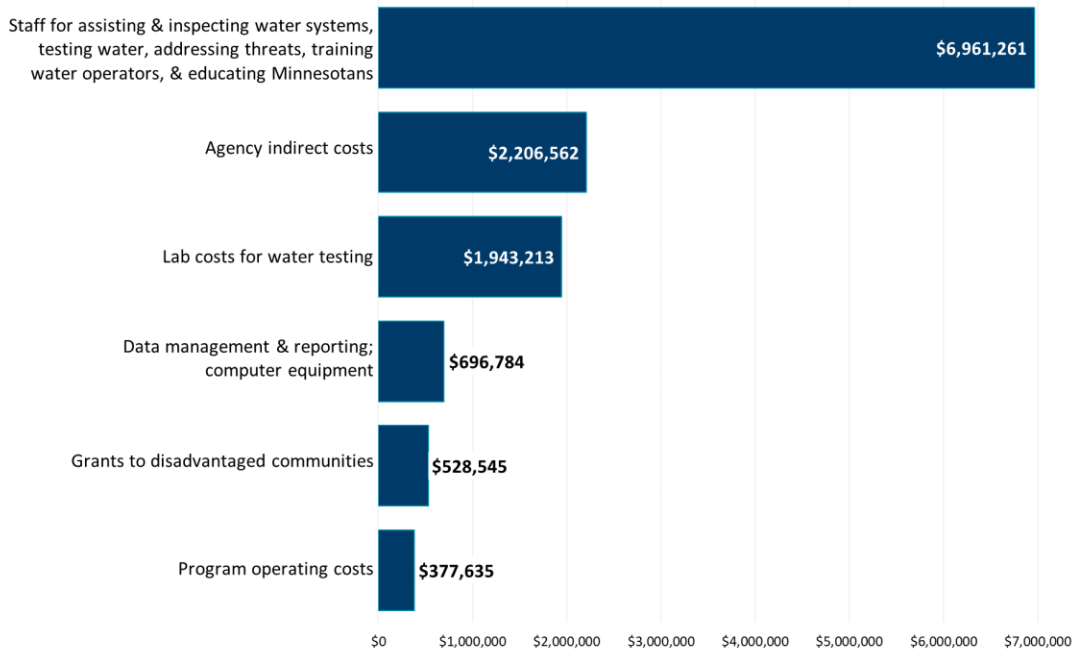
### Total budget: \$20.9 million after fee increase

\$2,597,492 restored to Drinking Water Revolving Fund, replaced by fee increase.



## What the Safe Drinking Water Fee funds

*Projected for fiscal year 2021*

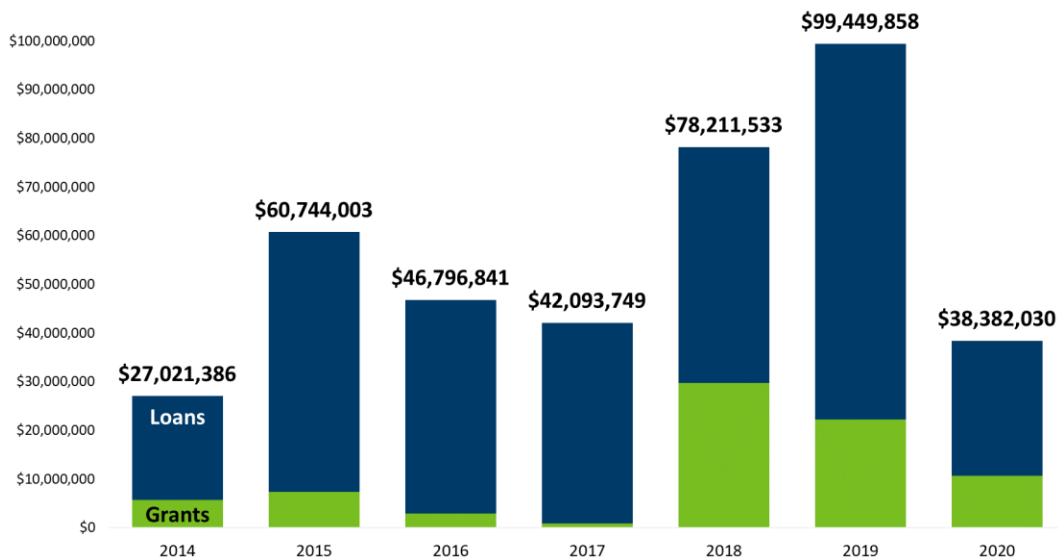


## Restoring funding to DWRP increases dollars for local infrastructure

Reducing MDH program dependence on DWRP through the fee increase is estimated to restore \$80 million over 20 years for local infrastructure needs. However, this only partially meets infrastructure needs. In 2020, funding requests totaled over \$738 million. EPA estimates that the need is \$375 million each year.

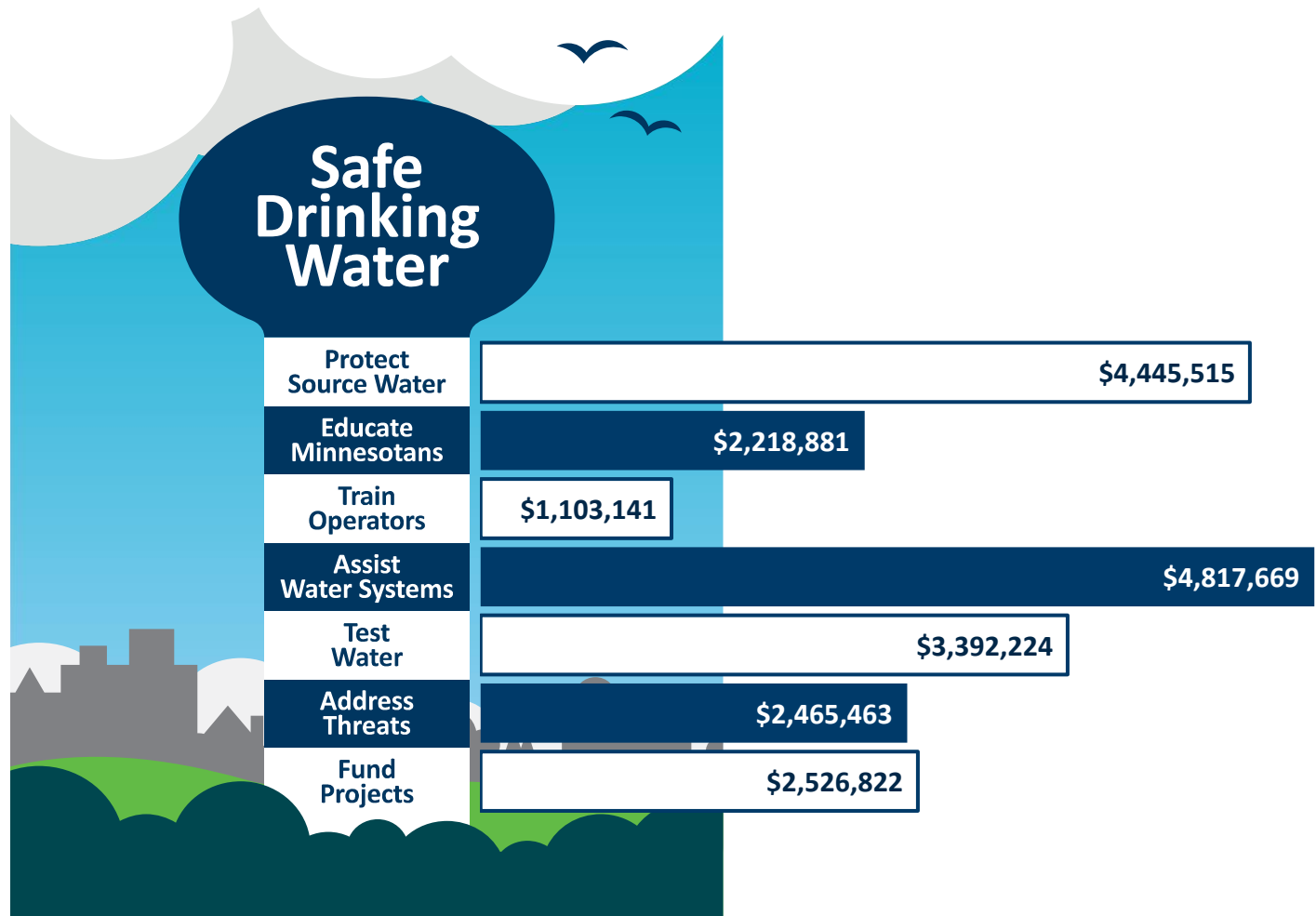
### Restoring funding to DWRP only partially meets infrastructure needs

Funding requests in 2020 totaled \$738,516,650. EPA estimates that the need is \$375 million each year.



*For 2020, there were a number of factors that contributed to it being an anomaly.*

## Drinking Water Protection section budget by activity area



Minnesota Department of Health  
Drinking Water Protection Section  
PO Box 64975  
St. Paul, MN 55164-0975  
651-201-4700  
[health.drinkingwater@state.mn.us](mailto:health.drinkingwater@state.mn.us)  
[www.health.state.mn.us](http://www.health.state.mn.us)

07/31/2020

To obtain this information in a different format, call 651-201-4700