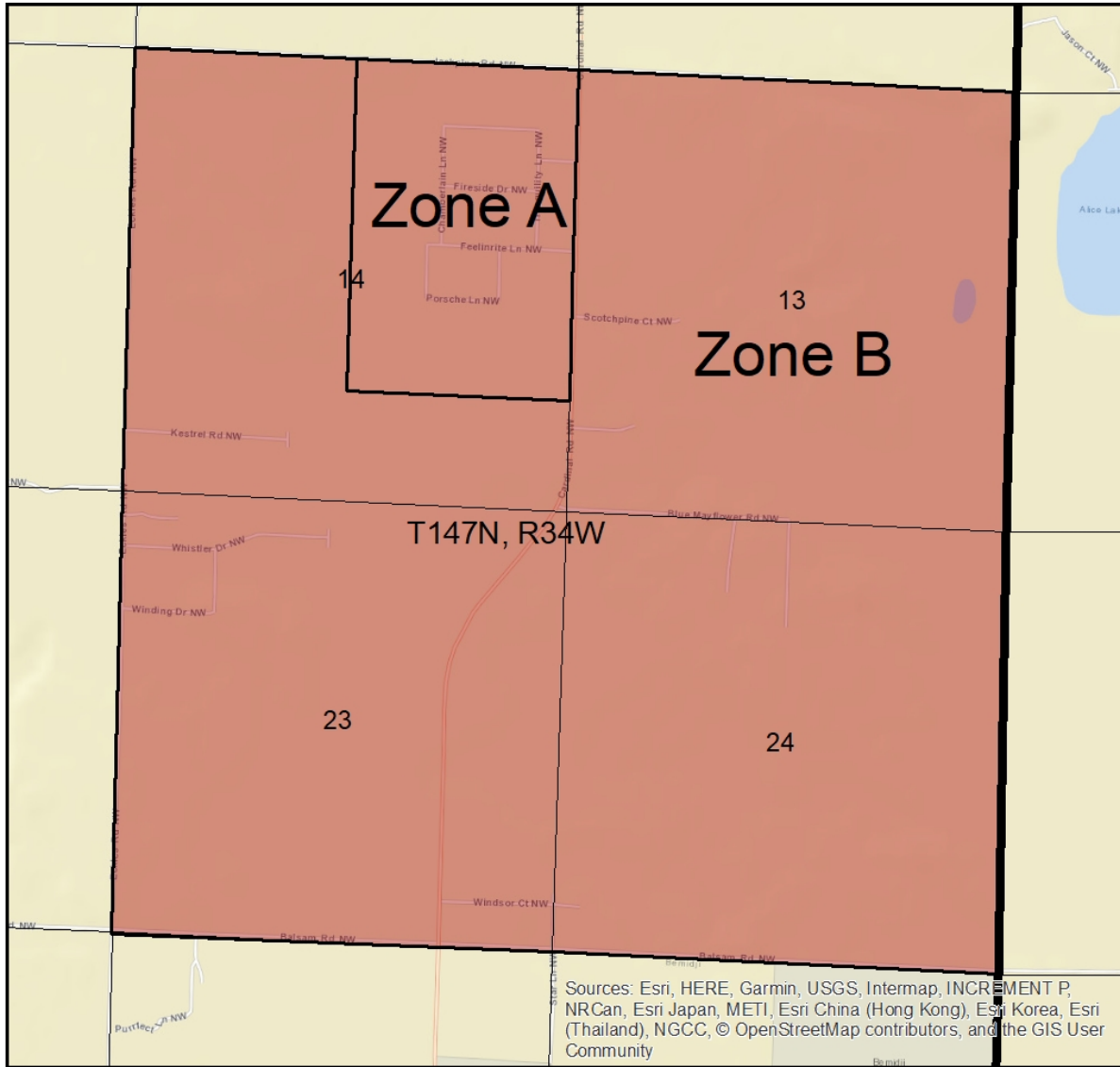
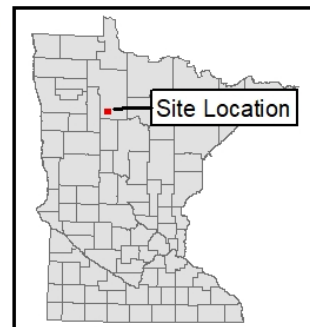


Special Well and Boring Construction Areas Eckles Township

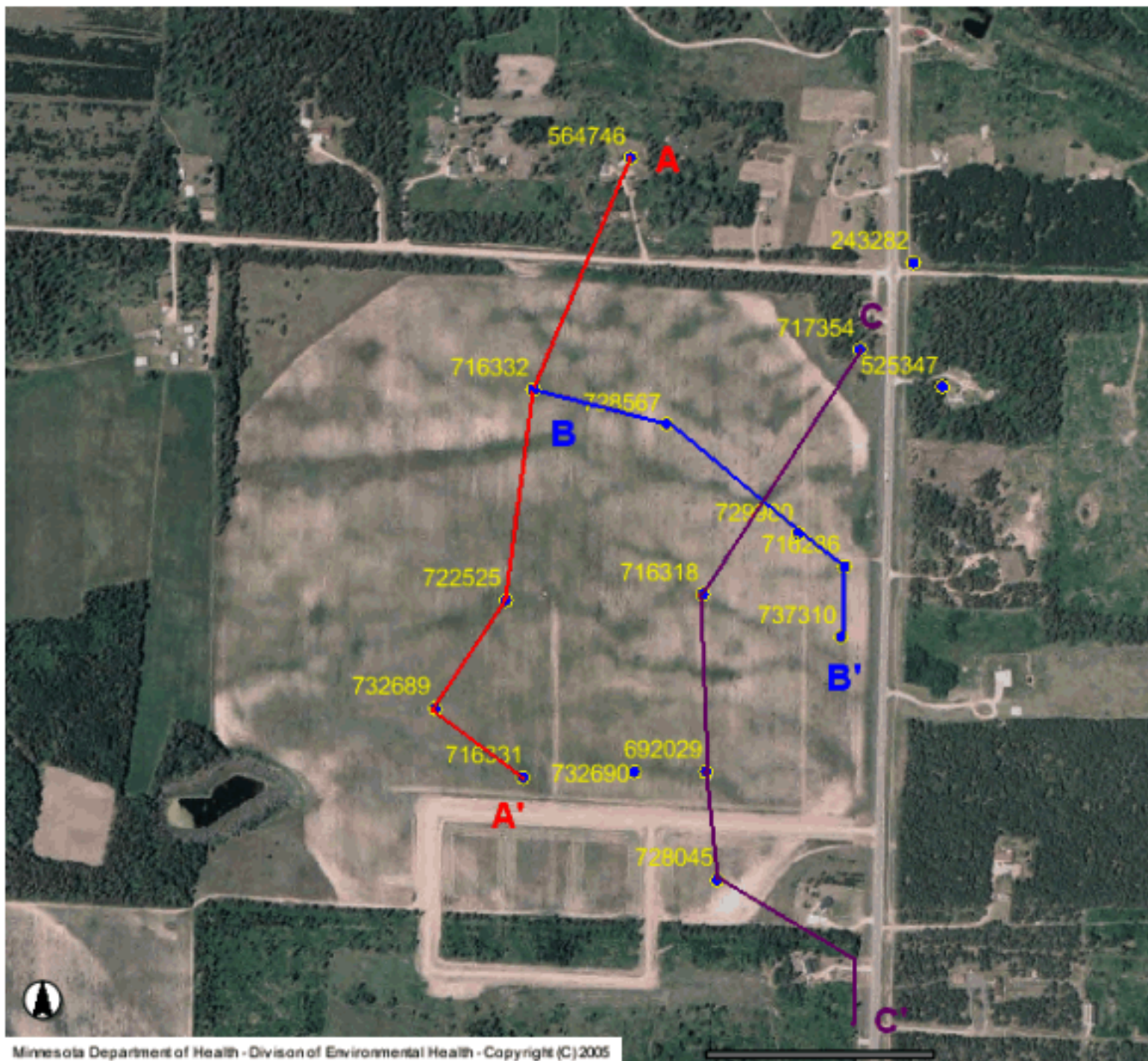


Published: November 2018 Filename: SWBCA_Eckles.mxd

0 0.275 0.55
Miles



P.O. Box 64975 • St. Paul, Minnesota 55164-0975 • 651-201-4600 • 800-383-9808 • health.wells@state.mn.us



Minnesota Department of Health - Division of Environmental Health - Copyright (C) 2005

Eckles Township - Section 14
(Northeast Quartile Cross-Section Delineation)

