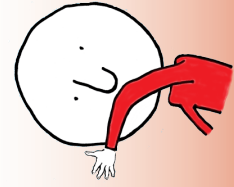


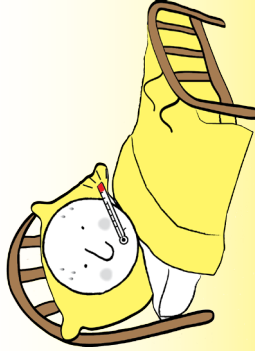
ተሻፍኑው ያስሉ



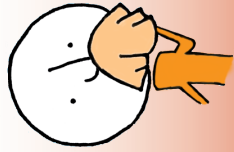
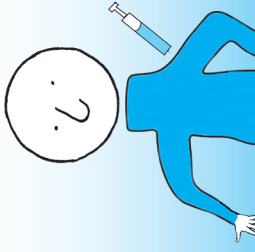
እጅዎን ይታጠቡ



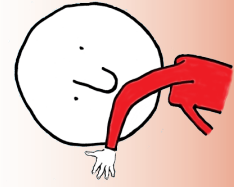
ከታመሙ ከቤት አይውጡ



ታካተቡ



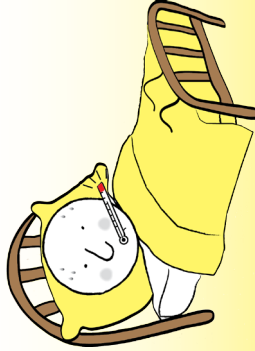
ተሻፍኑው ያስሉ



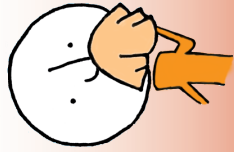
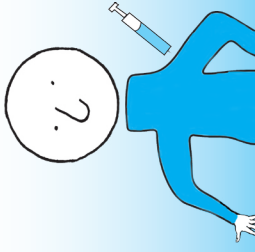
እጅዎን ይታጠቡ



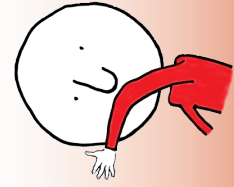
ከታመሙ ከቤት አይውጡ



ታካተቡ



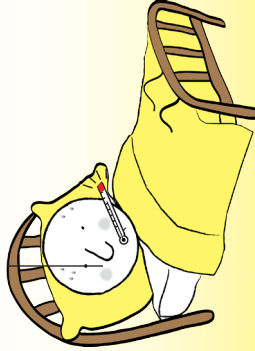
ተሻፍኑው ያስሉ



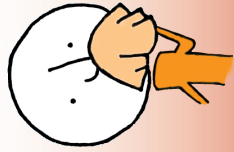
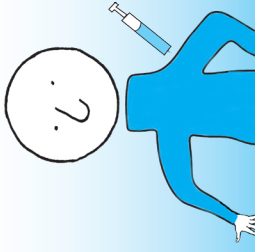
እጅዎን ይታጠቡ



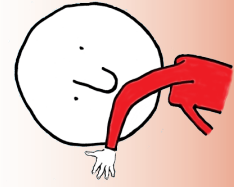
ከታመሙ ከቤት አይውጡ



ታካተቡ



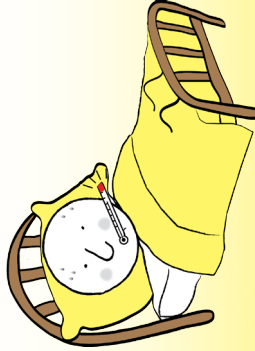
ተሻፍኑው ያስሉ



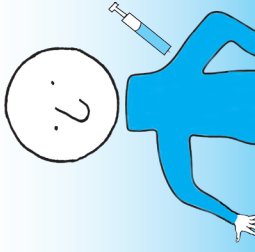
እጅዎን ይታጠቡ



ከታመሙ ከቤት አይውጡ



ታካተቡ



# FIGHT the FLU

የኢንፍሉዌንሻ በሽታን እንከላከል

Questions about flu?

Minnesota Department  
of Health

[www.mdhflu.com](http://www.mdhflu.com)

Centers for Disease Control

[www.cdc.gov](http://www.cdc.gov)

1-800-CDC-INFO  
(800-232-4636)

TTY: 1-888-232-6348

24 hours/every day

Your city or county public  
health department

# FIGHT the FLU

የኢንፍሉዌንሻ በሽታን እንከላከል

Questions about flu?

Minnesota Department  
of Health

[www.mdhflu.com](http://www.mdhflu.com)

Centers for Disease Control

[www.cdc.gov](http://www.cdc.gov)

1-800-CDC-INFO  
(800-232-4636)

TTY: 1-888-232-6348

24 hours/every day

Your city or county public  
health department

# FIGHT the FLU

የኢንፍሉዌንሻ በሽታን እንከላከል

Questions about flu?

Minnesota Department  
of Health

[www.mdhflu.com](http://www.mdhflu.com)

Centers for Disease Control

[www.cdc.gov](http://www.cdc.gov)

1-800-CDC-INFO  
(800-232-4636)

TTY: 1-888-232-6348

24 hours/every day

Your city or county public  
health department

# FIGHT the FLU

የኢንፍሉዌንሻ በሽታን እንከላከል

Questions about flu?

Minnesota Department  
of Health

[www.mdhflu.com](http://www.mdhflu.com)

Centers for Disease Control

[www.cdc.gov](http://www.cdc.gov)

1-800-CDC-INFO  
(800-232-4636)

TTY: 1-888-232-6348

24 hours/every day

Your city or county public  
health department