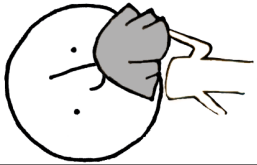
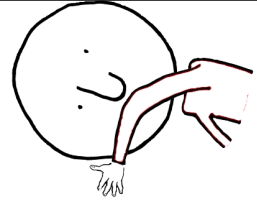


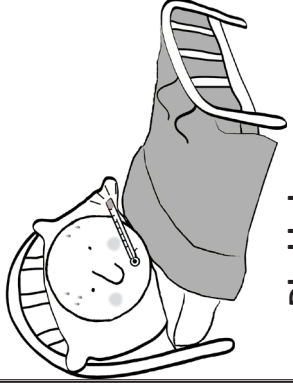
Qutaa irraa if Eegi



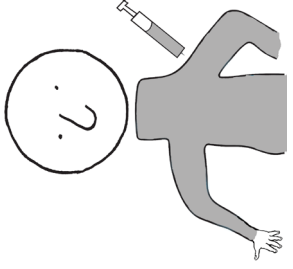
Yeroo qufaatu afaanii fi funyaan kee cuqqaalladhu!



Harka kee dhiqadhu.

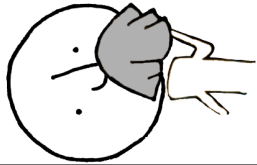


Dhukkubsannaan manaa hin bahin.

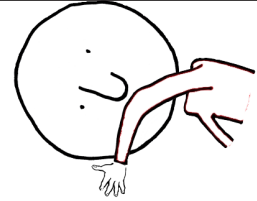


Talaalladhu.

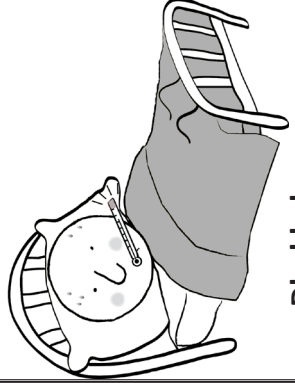
Qutaa irraa if Eegi



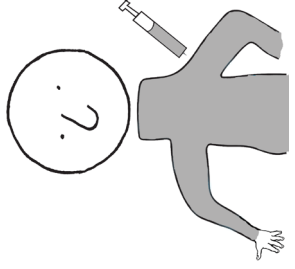
Yeroo qufaatu afaanii fi funyaan kee cuqqaalladhu!



Harka kee dhiqadhu.

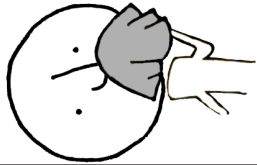


Dhukkubsannaan manaa hin bahin.

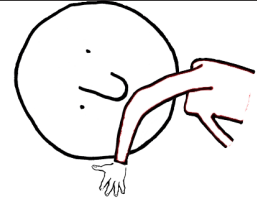


Talaalladhu.

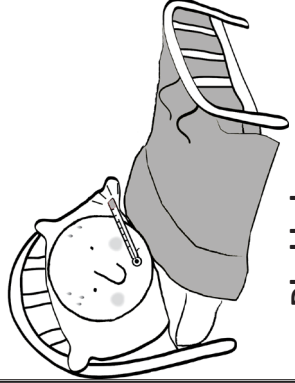
Qutaa irraa if Eegi



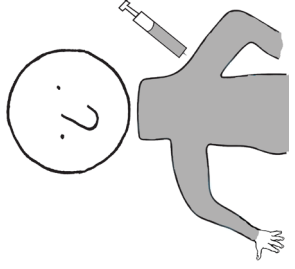
Yeroo qufaatu afaanii fi funyaan kee cuqqaalladhu!



Harka kee dhiqadhu.

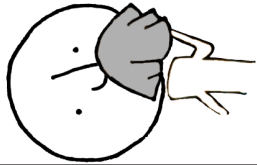


Dhukkubsannaan manaa hin bahin.

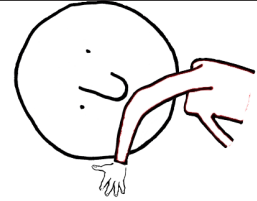


Talaalladhu.

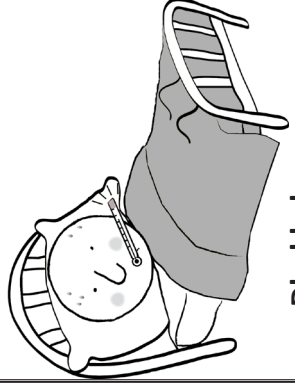
Qutaa irraa if Eegi



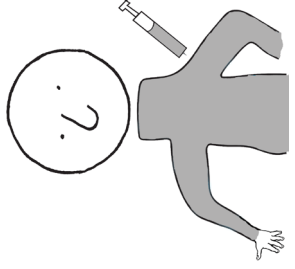
Yeroo qufaatu afaanii fi funyaan kee cuqqaalladhu!



Harka kee dhiqadhu.



Dhukkubsannaan manaa hin bahin.



Talaalladhu.

FIGHT the FLU

Qufaa irraa if Eegi

Questions about flu?

Minnesota Department
of Health

www.mdhflu.com

Centers for Disease Control

www.cdc.gov

1-800-CDC-INFO
(800-232-4636)

TTY: 1-888-232-6348

24 hours/every day

Your city or county public
health department

FIGHT the FLU

Qufaa irraa if Eegi

Questions about flu?

Minnesota Department
of Health

www.mdhflu.com

Centers for Disease Control

www.cdc.gov

1-800-CDC-INFO
(800-232-4636)

TTY: 1-888-232-6348

24 hours/every day

Your city or county public
health department

FIGHT the FLU

Qufaa irraa if Eegi

Questions about flu?

Minnesota Department
of Health

www.mdhflu.com

Centers for Disease Control

www.cdc.gov

1-800-CDC-INFO
(800-232-4636)

TTY: 1-888-232-6348

24 hours/every day

Your city or county public
health department

FIGHT the FLU

Qufaa irraa if Eegi

Questions about flu?

Minnesota Department
of Health

www.mdhflu.com

Centers for Disease Control

www.cdc.gov

1-800-CDC-INFO
(800-232-4636)

TTY: 1-888-232-6348

24 hours/every day

Your city or county public
health department