

Weekly Influenza & Respiratory Illness Activity Report

A summary of influenza surveillance indicators prepared by the Division of Infectious Disease Epidemiology Prevention & Control

Summary of the 2013-14 Season



All data are preliminary and may change as more reports are received

Summary of the 2013-14 Season

- Since the start of the influenza season, 1,539 people were hospitalized with laboratory-confirmed influenza.
- Since the start of the influenza season, 2 pediatric influenza-related deaths were confirmed.
- Since the start of the influenza season, 27 outbreaks of influenza in long-term care were reported.
- Since the start of the influenza season, 93 outbreaks of ILI in schools were reported.

Minnesota Influenza Surveillance Website: www.health.state.mn.us/diseases/flu/stats/

Weekly U.S. Influenza Surveillance Report: www.cdc.gov/flu/weekly/

World Health Organization (WHO) Surveillance: www.who.int/influenza/surveillance_monitoring/updates/en/

Google Flu Trends: www.google.org/flutrends/us/

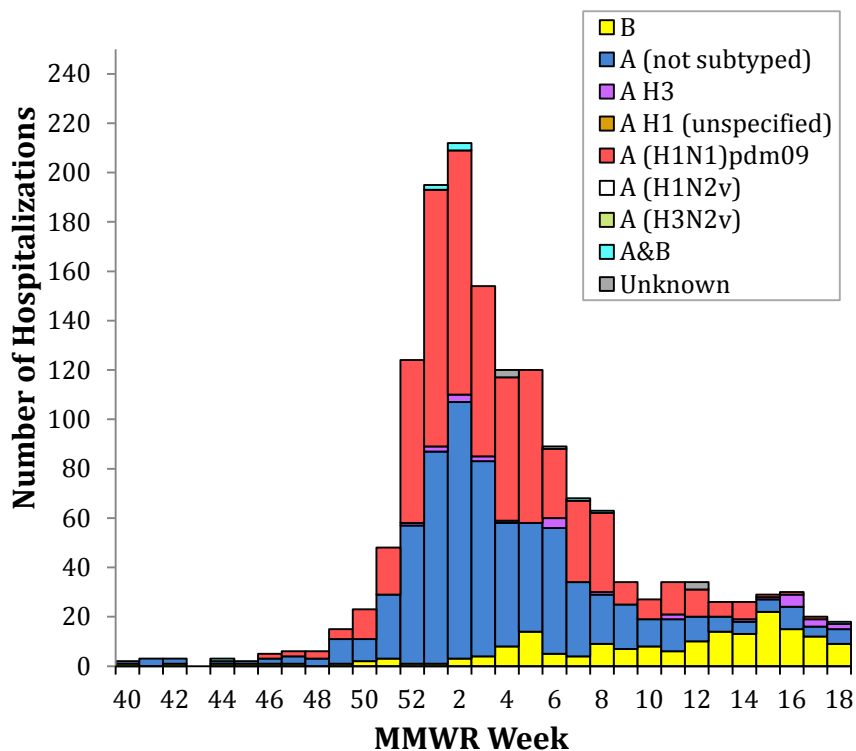
Neighboring states' influenza information:

Iowa	www.idph.state.ia.us/IdphArchive/Archive.aspx?channel=FluReports
Wisconsin	www.dhs.wisconsin.gov/communicable/influenza/surveillance.htm
North Dakota	www.ndflu.com/default.aspx
South Dakota	http://doh.sd.gov/diseases/infectious/flu/

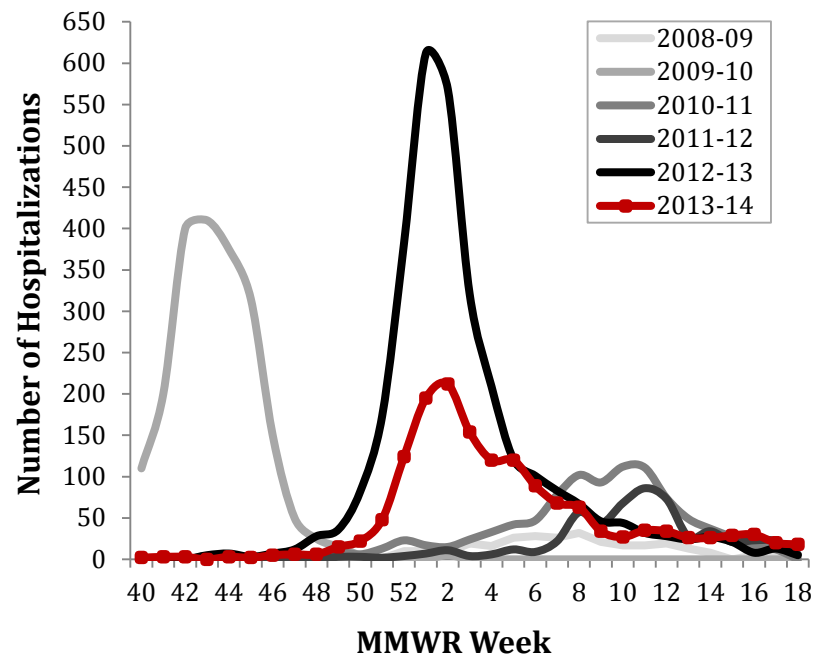
Hospitalized Influenza Surveillance

Hospitalized influenza cases are based on disease reports of laboratory-positive influenza (via DFA, IFA, viral culture, EIA, rapid test, paired serological tests or RT-PCR) and specimens from hospitalized patients with acute respiratory illness submitted to MDH-PHL by hospitals and laboratories. Due to the need to confirm reports and reporting delays, consider current week data preliminary.

Hospitalized Influenza Cases by Type Minnesota (FluSurv-NET*)



Hospitalized Influenza Cases by Season, Minnesota (FluSurv-NET*)



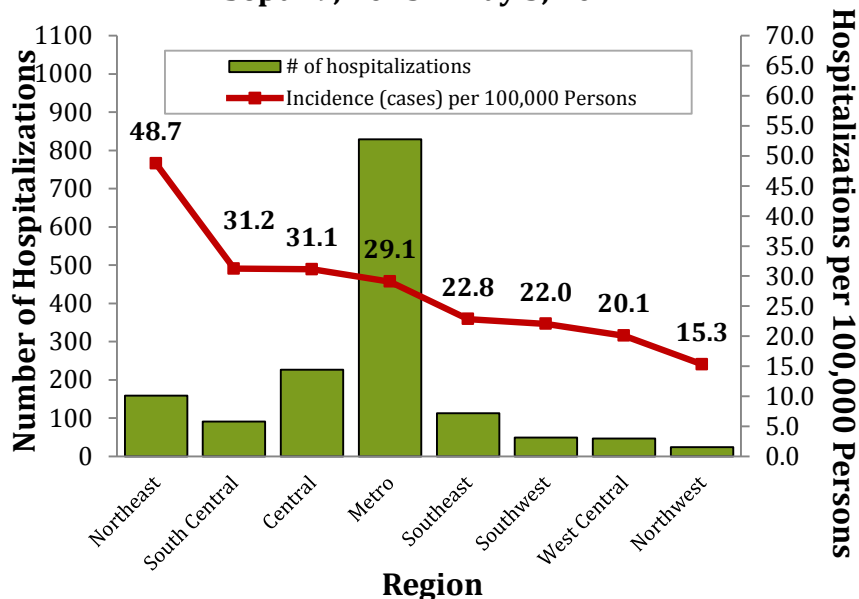
Hospitalizations this week	Hospitalizations last week	Total (to date)
--	--	1,539

Season	Hospitalizations current week (historic)	Total
2008-2009	--	293
2009-2010	--	2,060
2010-2011	--	965
2011-2012	--	556
2012-2013	--	3,068
2013-2014	--	1,539

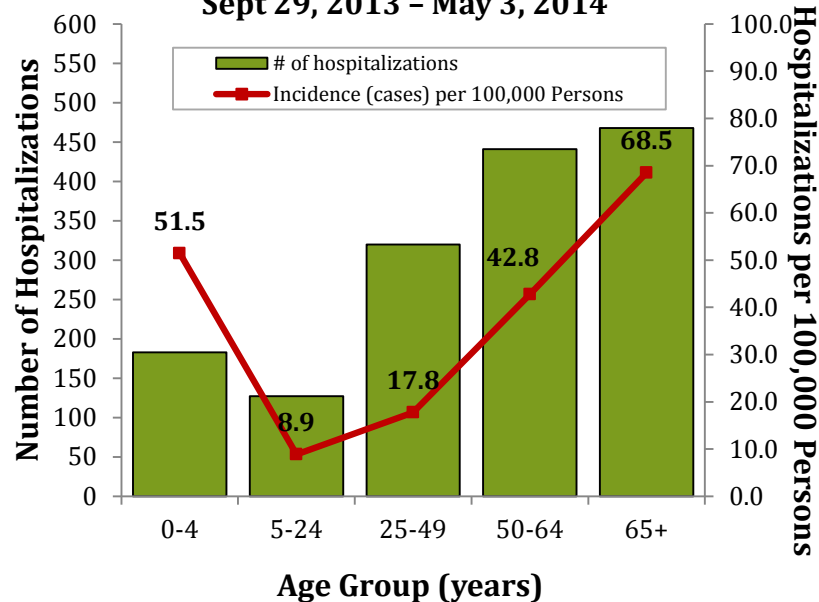
*Influenza Surveillance Network

Hospitalized Influenza Surveillance – continued

**Number of Influenza Hospitalizations and Incidence by Region, Minnesota
Sept 29, 2013 - May 3, 2014**



**Number of Influenza Hospitalizations and Incidence by Age, Minnesota
Sept 29, 2013 - May 3, 2014**



Region	Hospitalizations this week	Total (to date)
Central	--	227 (15%)
Metro	--	829 (54%)
Northeast	--	159 (10%)
Northwest	--	24 (2%)
South Central	--	91 (6%)
Southeast	--	113 (7%)
Southwest	--	49 (3%)
West Central	--	47 (3%)

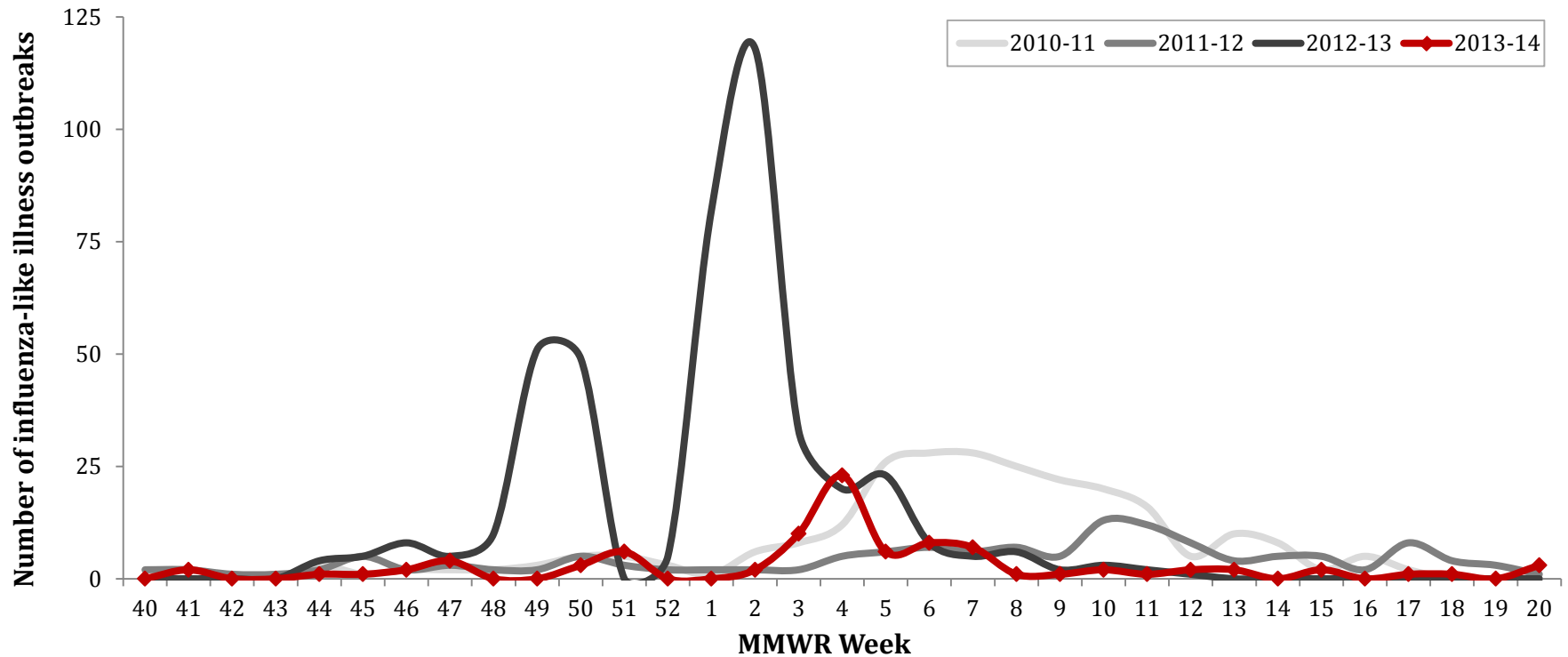
Median age (years) at time of admission
54.8

Respiratory Disease Outbreak Surveillance

School Outbreaks

K-12 schools report an outbreak of influenza-like illness (ILI) when the number of students absent with ILI reaches 5% of total enrollment or three or more students with ILI are absent from the same elementary classroom

Influenza-like Illness (ILI) in Schools by Season



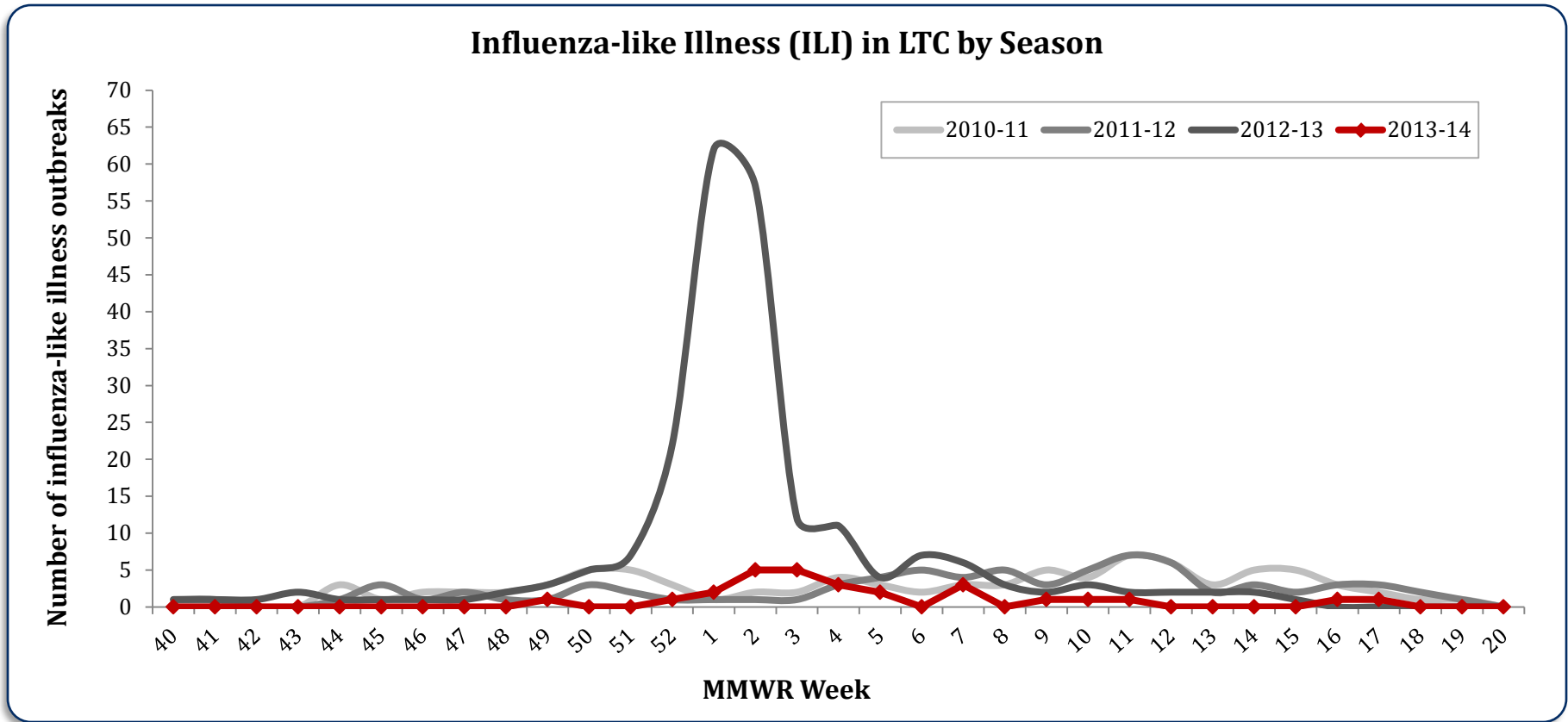
Total

93

Respiratory Disease Outbreak Surveillance

Long-Term Care (LTC) Outbreaks

LTC facilities report to MDH when they suspect an outbreak of influenza in their facility. Laboratory confirmed outbreaks are reported here

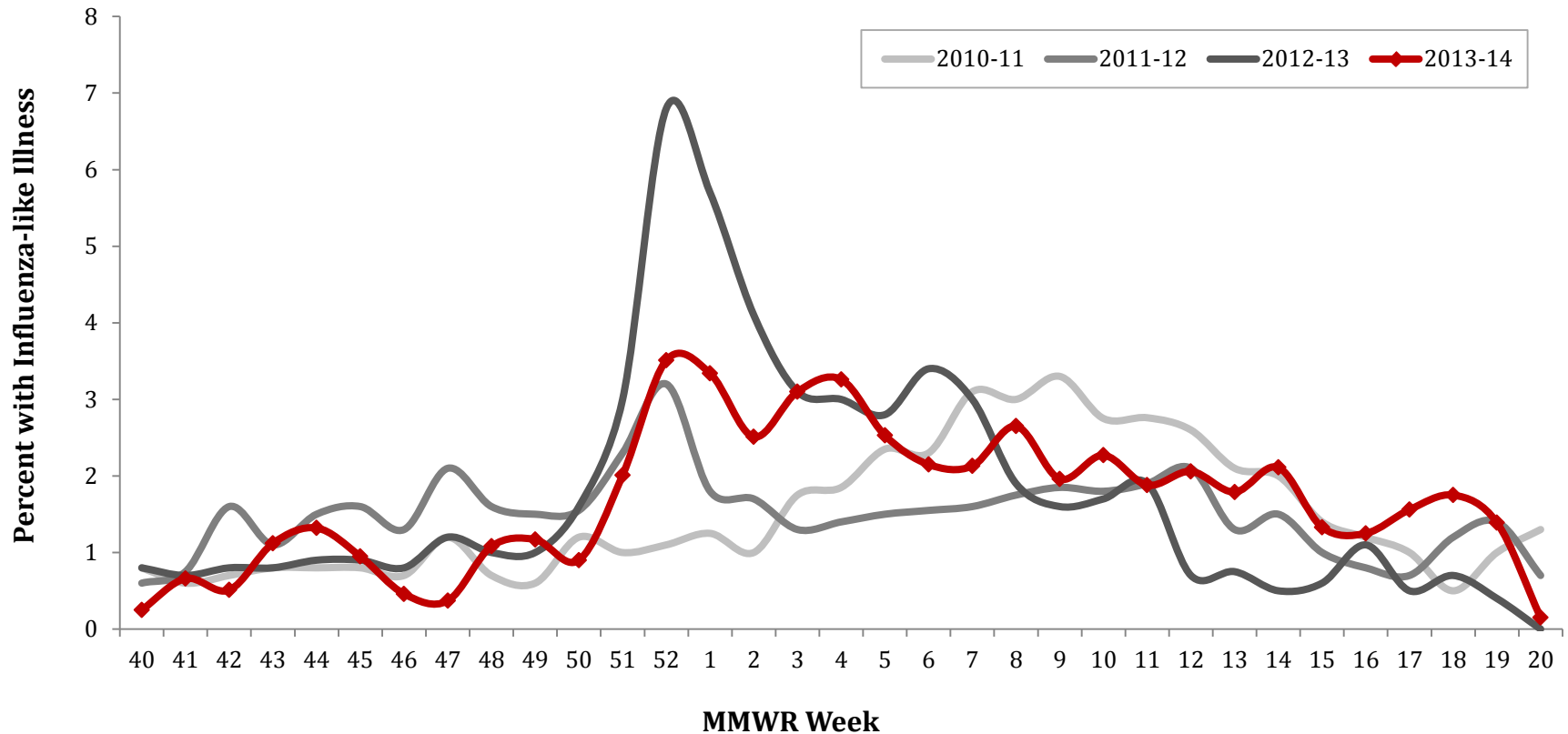


Total (to date)
27

Sentinel Provider Surveillance (Outpatients)

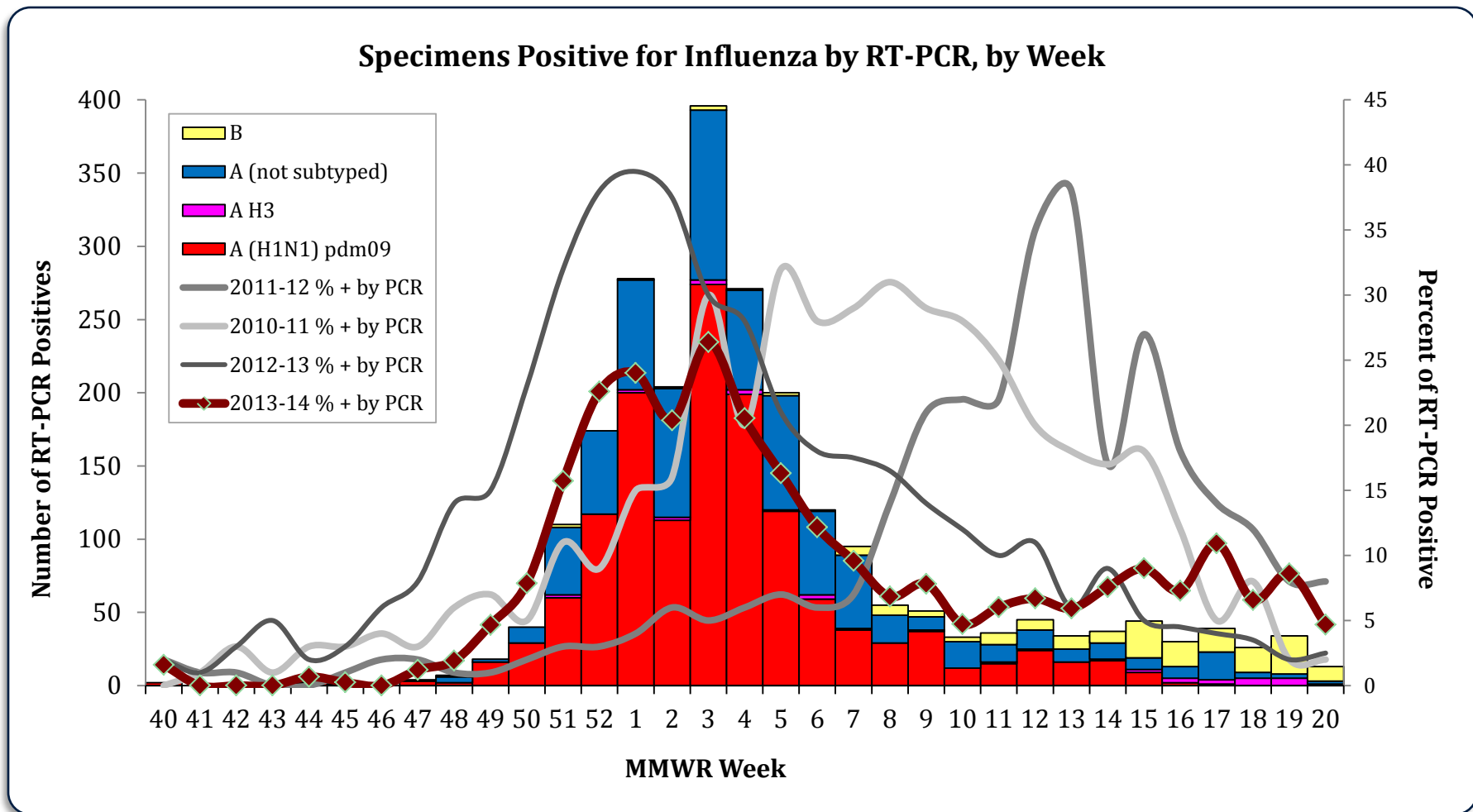
MDH collaborates with healthcare providers who report the total number of patients seen and the total number of those patients presenting to outpatient clinics with influenza-like illness.

Percentage of Persons Presenting to Outpatient Clinics with Influenza-Like Illness (ILI)



Laboratory Surveillance

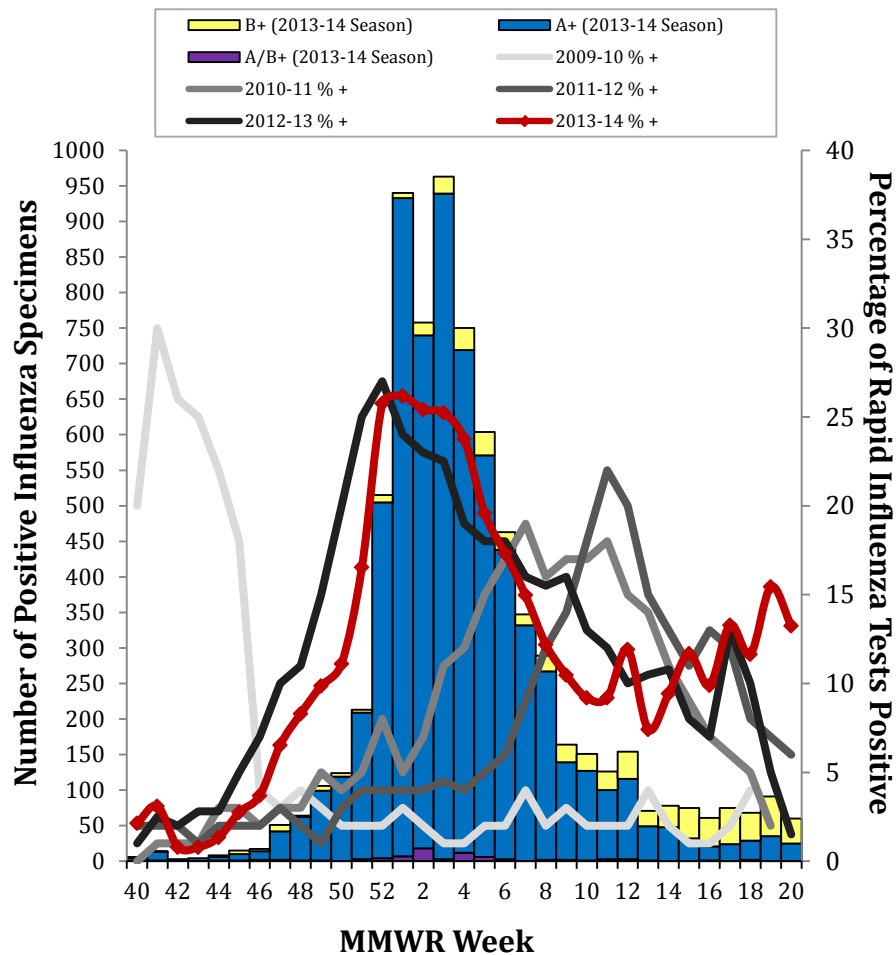
The MN Lab System (MLS) Laboratory Influenza Surveillance Program is made up of more than 310 clinic- and hospital-based laboratories, voluntarily submitting testing data weekly. These laboratories perform rapid testing for influenza and Respiratory Syncytial Virus (RSV). Significantly fewer labs perform PCR testing for influenza and three also perform PCR testing for other respiratory viruses. MDH-PHL provides further characterization of submitted influenza isolates to determine the hemagglutinin serotype to indicate vaccine coverage. Tracking the laboratory results assists healthcare providers with patient diagnosis of influenza-like illness and provides an indicator of the progression of the influenza season as well as prevalence of disease in the community.



Laboratory Surveillance – Rapid Test

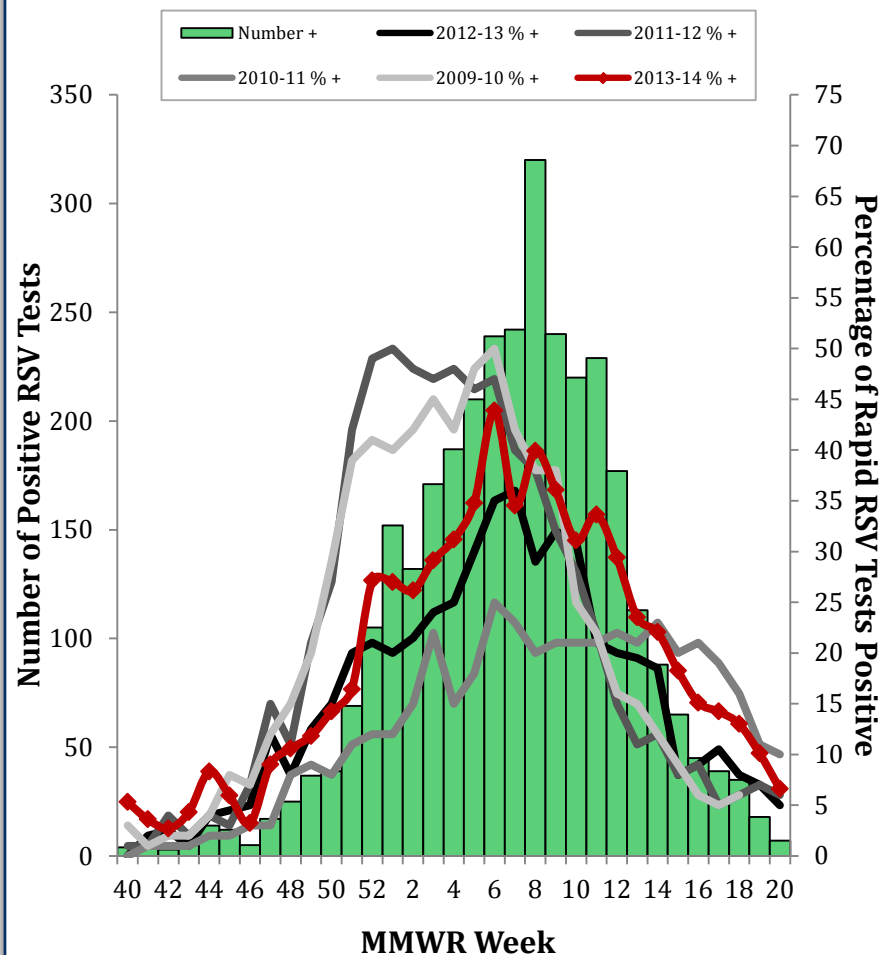
MLS Laboratories – Influenza Testing

Specimens Positive by Influenza Rapid Test, by Week



MLS Laboratories – RSV Testing

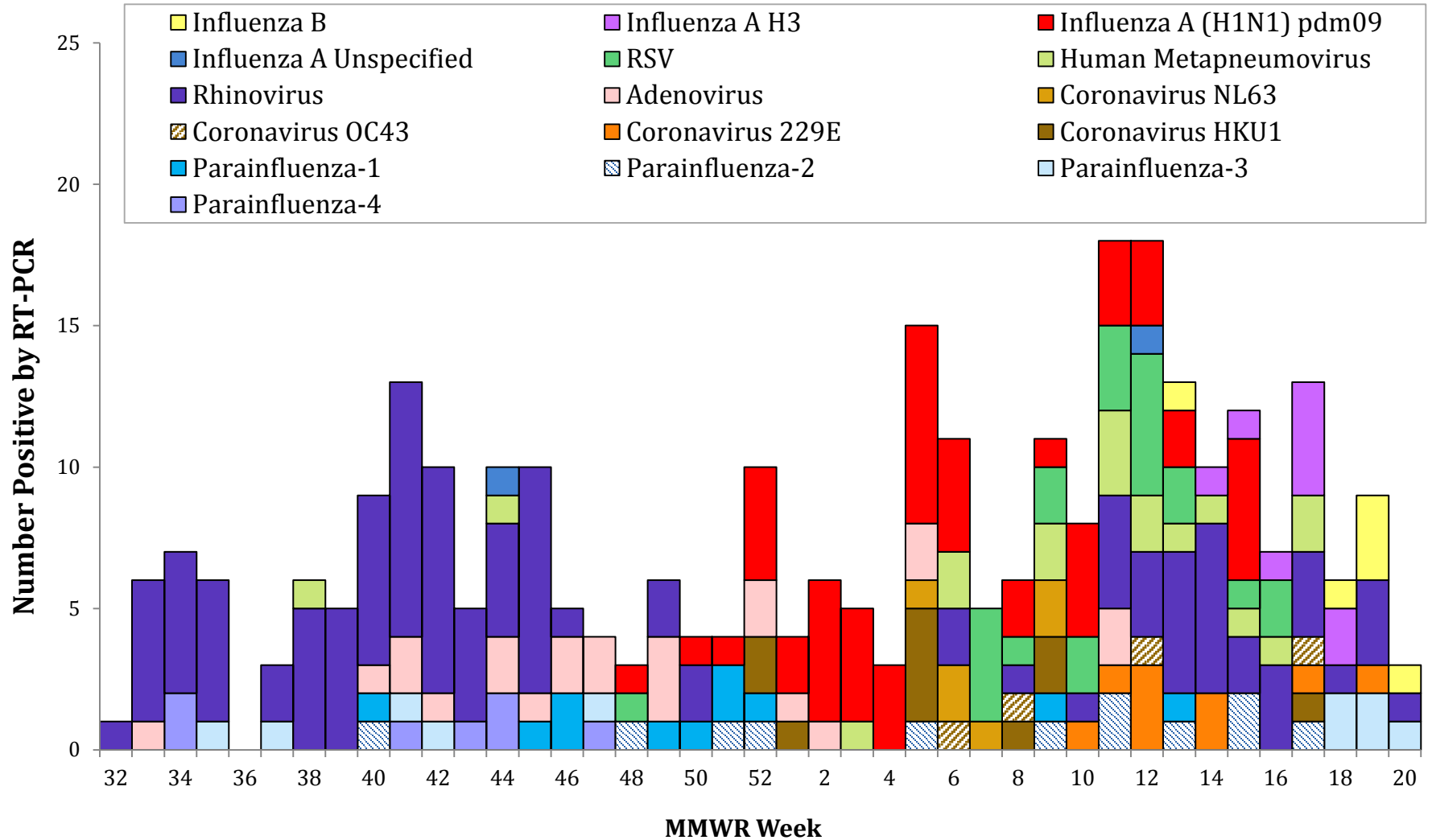
Specimens Positive by RSV Rapid Test, by Week



Laboratory Surveillance – PCR

MN Influenza Incidence Project (IISP) - Outpatients

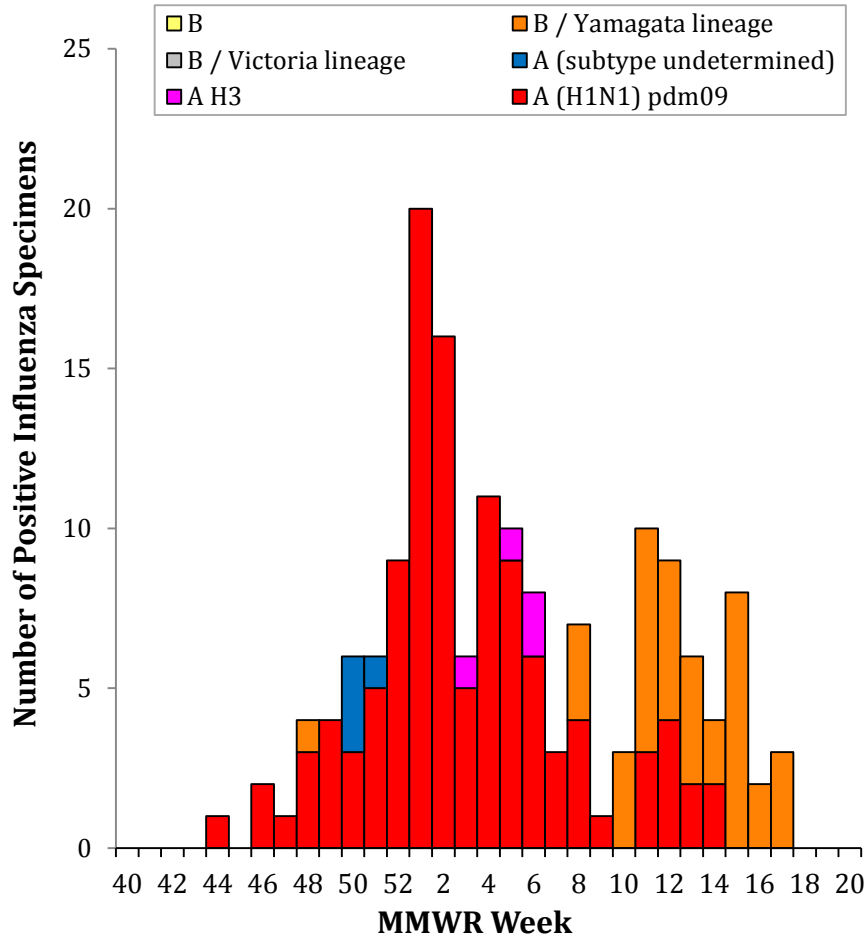
Pathogens Detected, Minnesota IISP - 2013-14



Laboratory Surveillance – Viral Culture

MDH-PHL

Viral Culture Positive Influenza Subtypes, by Week



Minnesota Virology Laboratories (MLS)

Viral Cultures Positive for Circulating Respiratory Viral Pathogens, by Week

