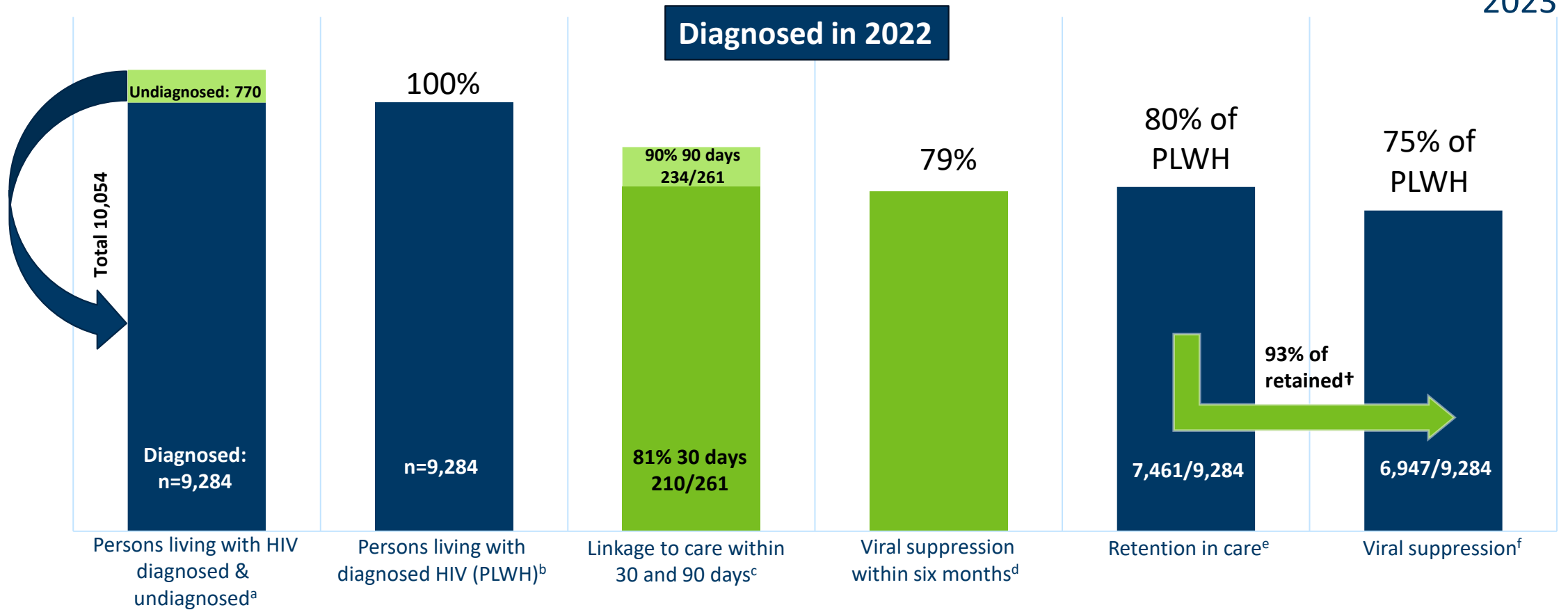




Percentages of People with HIV Engaged in Selected Stages of the Care Continuum, 2023

Percentages of persons with HIV engaged in selected stages of the continuum of care – Minnesota, 2023



^aDefined as persons undiagnosed (estimate 770 (150-1,400), 95% CI) and persons diagnosed (n=9,284) aged 13 or more with HIV infection (regardless of stage at diagnosis) through year-end 2022, who were alive at year-end 2023.

^bDefined as persons diagnosed aged 13 or more with HIV infection (regardless of stage at diagnosis) through year-end 2022, who were alive at year-end 2023.

^cCalculated as the percentage of persons linked to care within 30 and 90 days after initial HIV diagnosis during 2022. Linkage to care is based on the number of persons diagnosed during 2022 and is therefore shown in a different color than the other bars with a different denominator.

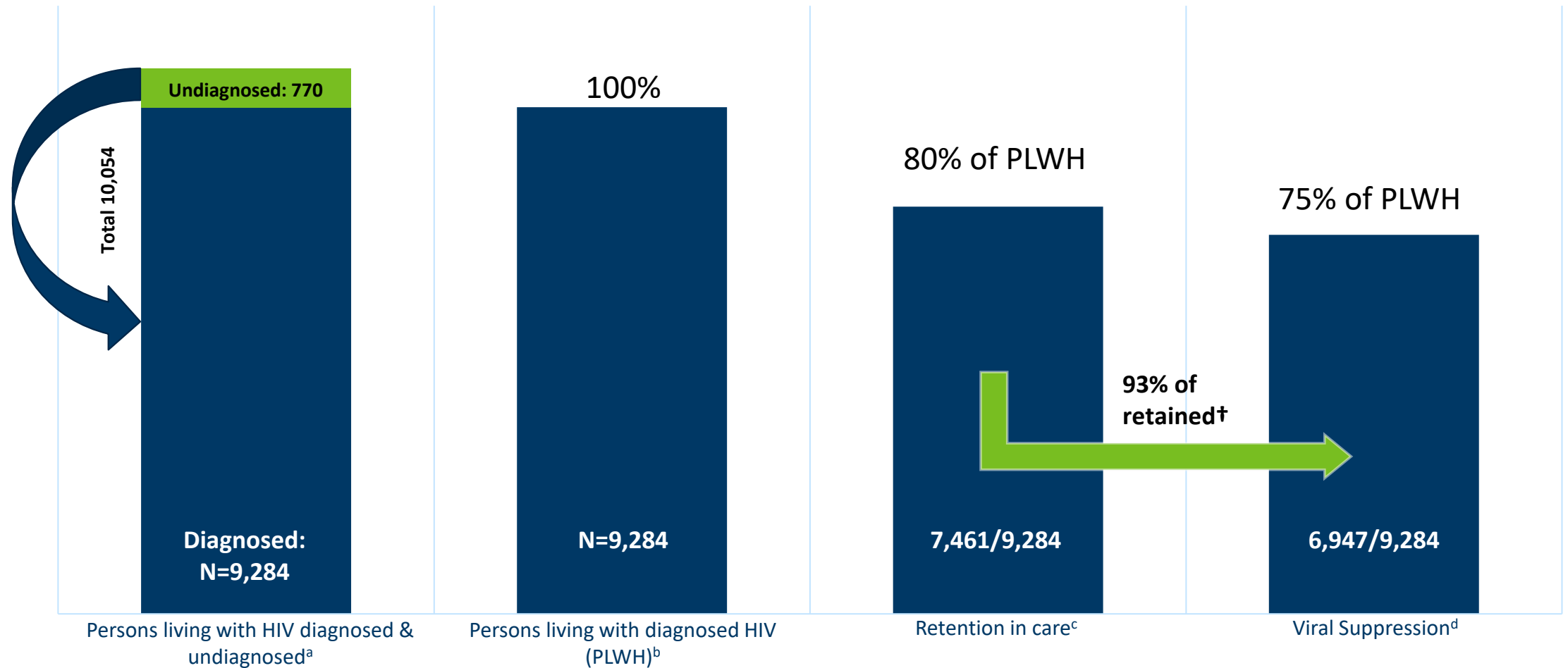
^dCalculated as the percentage of person who had an initial HIV diagnosis during 2022 that were virally suppressed VL (≤ 200 copies/mL) within six months of HIV diagnosed. Shown in a different color than the other bars with a different denominator.

^eCalculated as the percentage of persons who had \geq one CD4 or viral load test results during 2023 among those diagnosed with HIV through year-end 2022 and alive at year end 2023.

^fCalculated as the percentage of persons who had suppressed viral load (≤ 200 copies/mL) at most recent test during 2023, among those diagnosed with HIV through year-end 2022 and alive at year-end 2023.

[†]Calculated as number of persons who had suppressed VL (≤ 200 copies/mL) at most recent test during 2023, among those who were retained in care during 2023 (6,947/7,461).

Percentages of persons with HIV engaged in selected stages of the continuum of care – Minnesota, 2023



^aDefined as persons undiagnosed (estimate 770 (150-1,400), 95% CI) and persons diagnosed (n=9,284) aged 13 or more with HIV infection (regardless of stage at diagnosis) through year-end 2022, who were alive at year-end 2023.

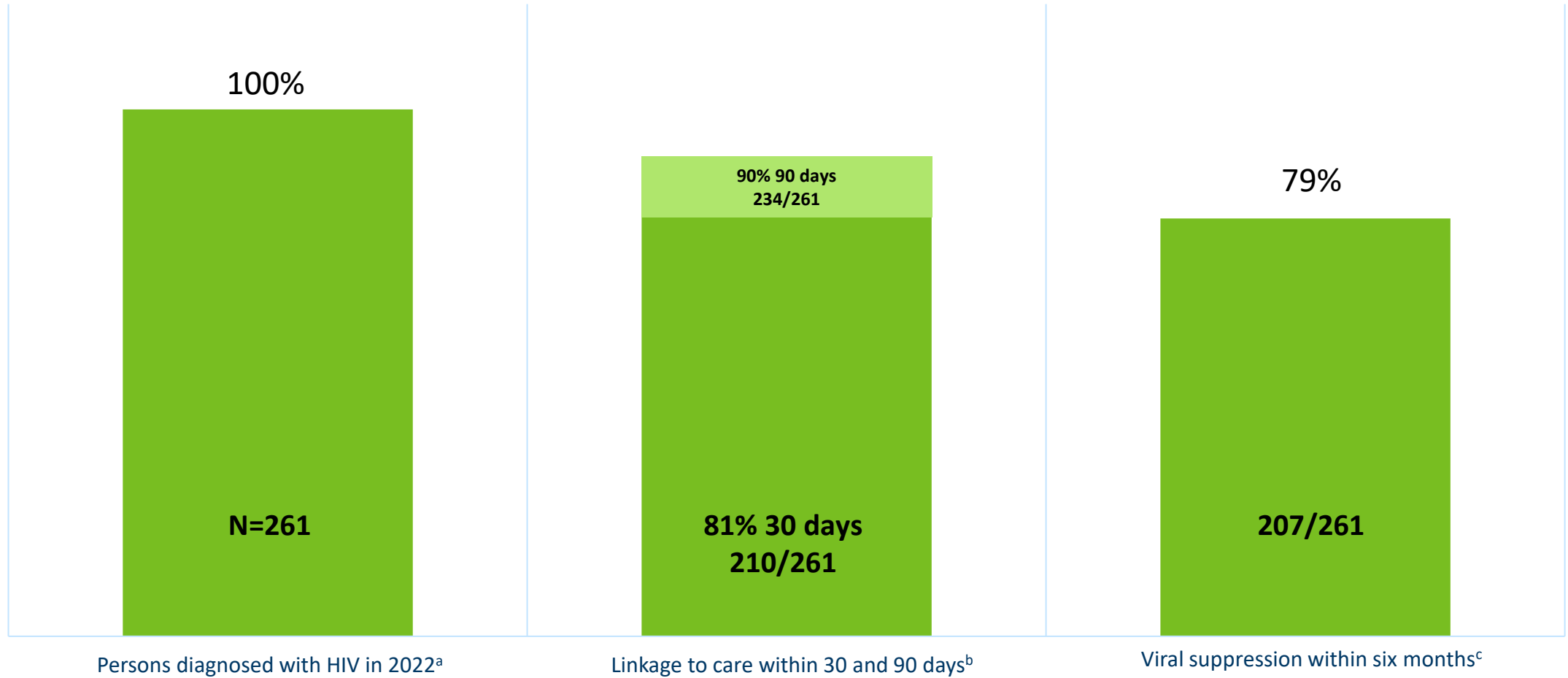
^bDefined as persons diagnosed aged 13 or more with HIV infection (regardless of stage at diagnosis) through year-end 2022, who were alive at year-end 2023.

^cCalculated as the percentage of persons who had ≥ one CD4 or viral load test results during 2023 among those diagnosed with HIV through year-end 2022 and alive at year end 2023.

^dCalculated as the percentage of persons who had suppressed viral load (≤200 copies/mL) at most recent test during 2023, among those diagnosed with HIV through year-end 2022 and alive at year-end 2023.

[†]Calculated as number of persons who had suppressed VL (≤200 copies/mL) at most recent test during 2023, among those who were retained in care during 2023 (6,947/7,461).

Percentages of persons with HIV engaged in selected stages of the continuum of care - Minnesota, Linkage to care & HIV viral suppression within six months of HIV diagnosis, 2022



^aDefined as persons diagnosed aged 13 or more with HIV infection (regardless of stage at diagnosis) initial HIV diagnosis during 2022.

^bCalculated as the percentage of persons linked to care within 30 and 90 days after initial HIV diagnosis during 2022. Linkage to care is based on the number of persons diagnosed during 2022 and is therefore shown in a different color than the other bars with a different denominator.

^cCalculated as the percentage of persons who had an initial HIV diagnosis during 2022 who had viral suppressed viral load (≤ 200 copies/mL) within six months of HIV diagnosis.