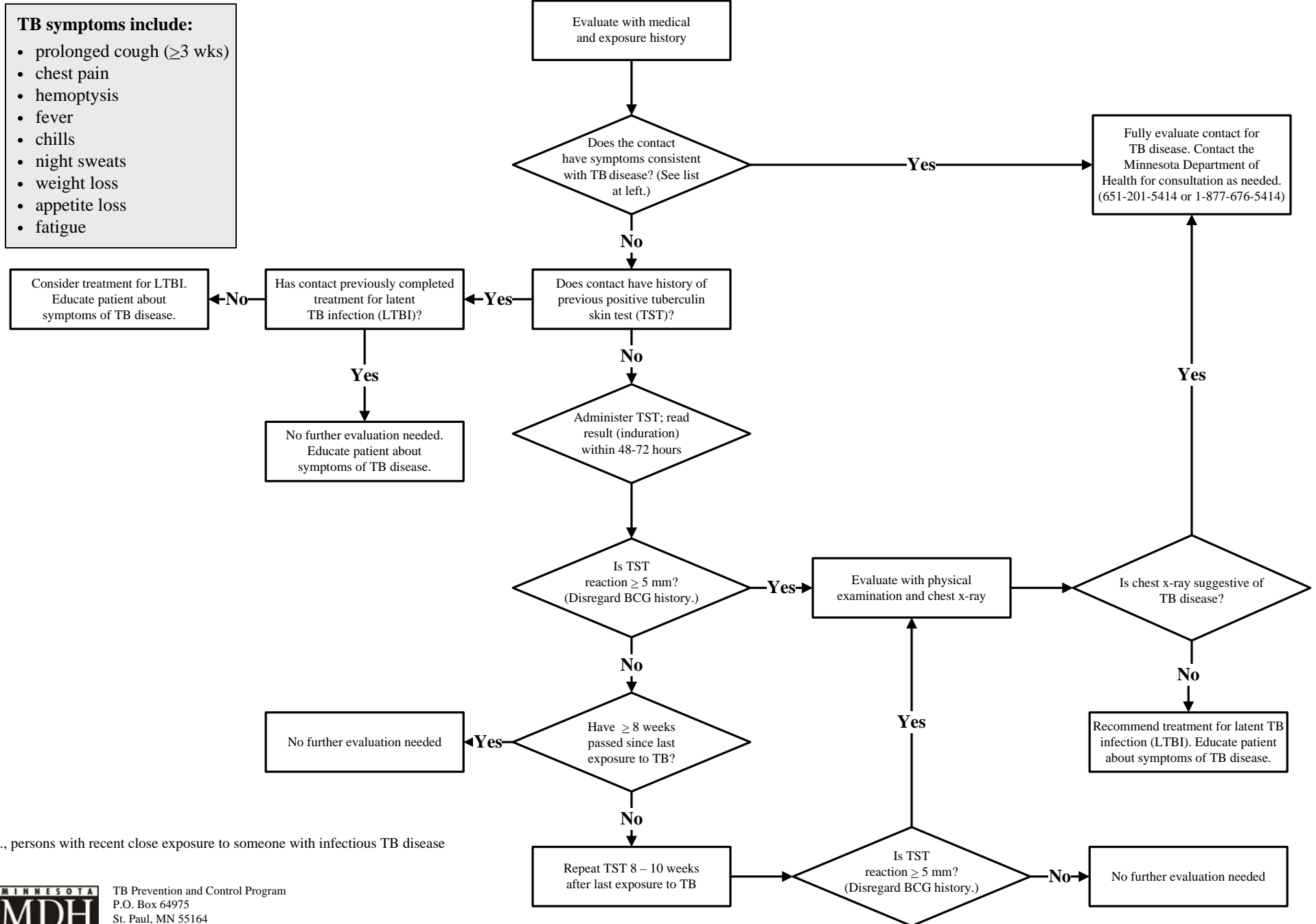


# Evaluation and Treatment of Immunocompetent Tuberculosis (TB) Contacts\* and TB Contacts $\geq 5$ Years of Age



\* i.e., persons with recent close exposure to someone with infectious TB disease



TB Prevention and Control Program  
 P.O. Box 64975  
 St. Paul, MN 55164  
 651-201-5414, 1-877-676-5414  
[www.health.state.mn.us/tb](http://www.health.state.mn.us/tb)