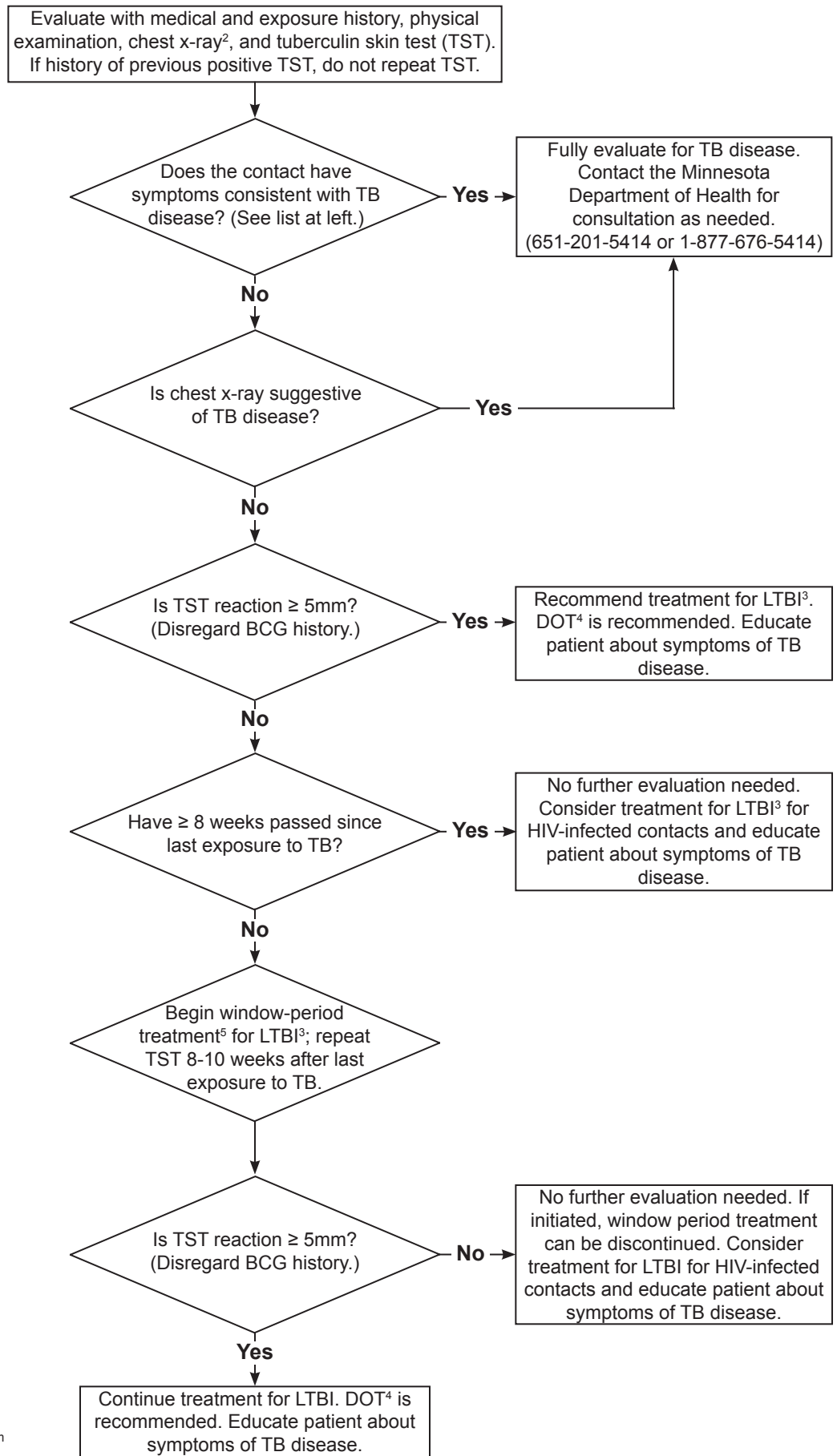


Evaluation and Treatment of Immunocompromised Tuberculosis (TB) Contacts¹ and TB Contacts < 5 Years of Age

- TB Symptoms Include:**
- prolonged cough (≥ 3 weeks)
 - chest pain
 - hemoptysis
 - fever
 - chills
 - night sweats
 - weight loss
 - appetite loss
 - fatigue



¹ i.e., persons with recent close exposure to someone with infectious TB disease

² children < 5 years of age should have both PA and lateral views

³ Latent TB infection

⁴ directly observed therapy

⁵ treatment provided for possible LTBI between the initial and post-exposure TST; DOT is recommended