

SWIPe Installation

JUNE 2024

Introduction

SWIPe is an application that will need to be installed on any computer that will be used for the WINNIE application. This program allows for peripheral equipment such as scanners and e-pads to be used with WINNIE.

Document Purpose

This document provides Information Technology groups with the necessary information required to install SWIPe on their computers. If SWIPe is only being updated, please follow these same steps.

Instructions

Windows 10

Downloading the SWIPe File

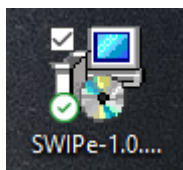
A Local Administrator account will need to be used to install SWIPe on each computer.

- For State supplied computers, log into the Tempuser account.
- For County machines, log into a local administrator account for that computer.

Then Log into the Agency Gateway site on FileZilla, and then navigate to the SWIPe folder. Download the SWIPe-1.0.24081.1.msi file to the desktop.

Installation Steps

- Once Downloaded, right click on the icon on the desktop.

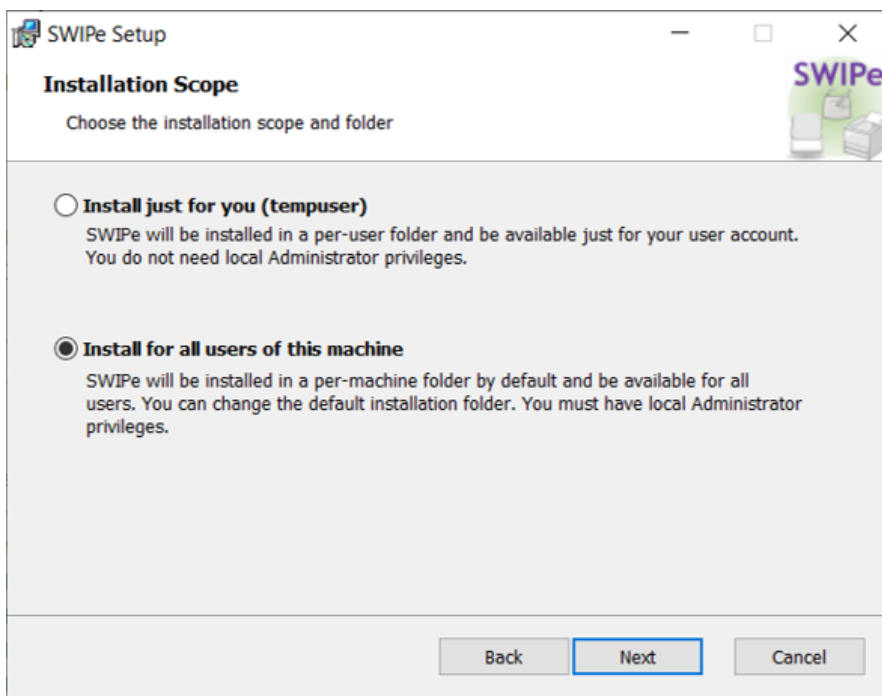


- Select Install.

SWIPE INSTALLATION

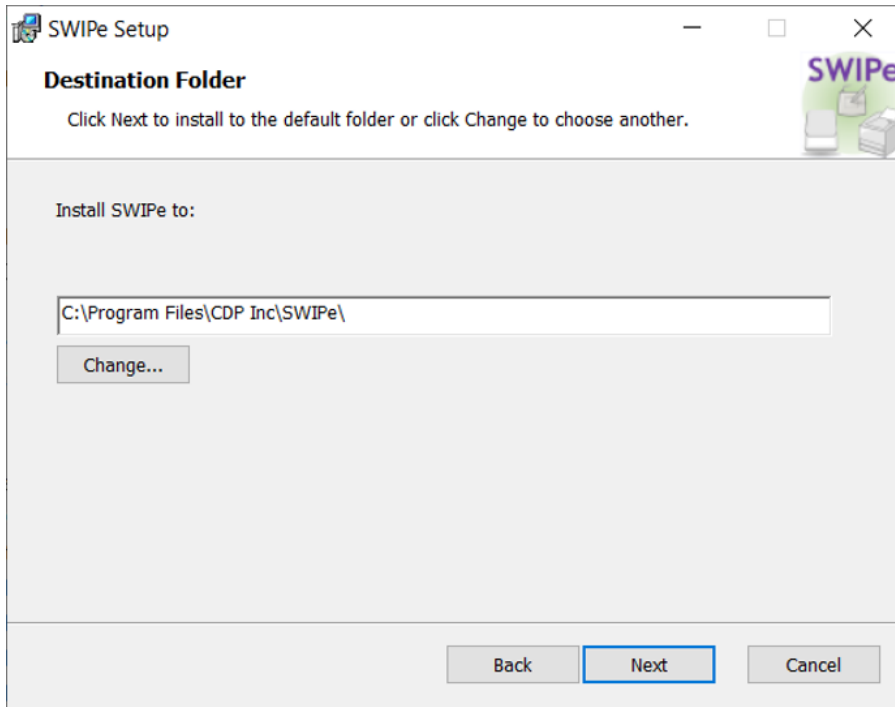


- Click the Next button on the Setup Wizard message.

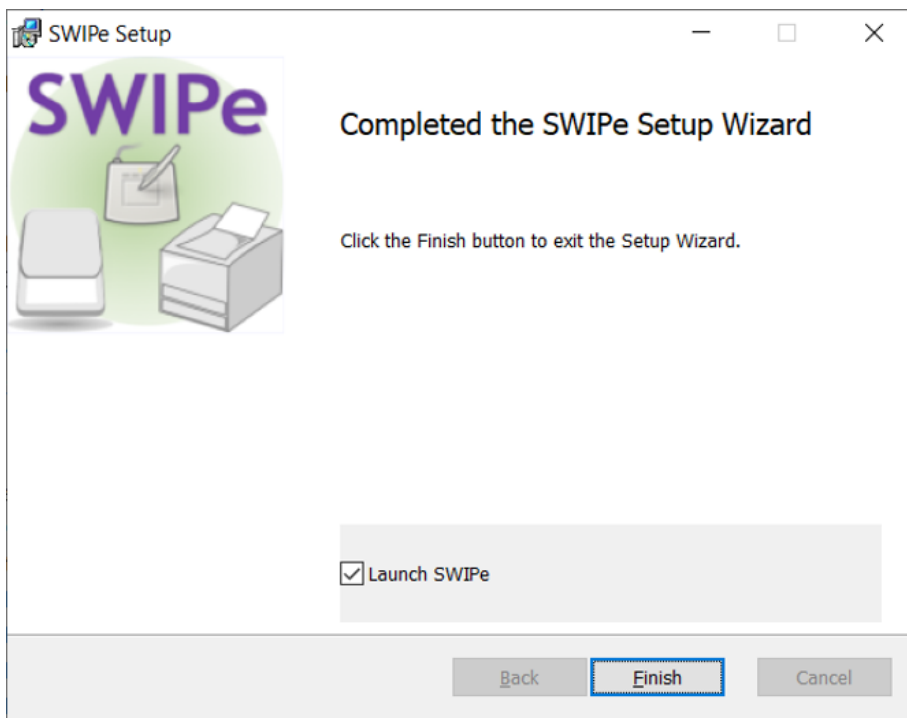


- Click the "Install for all users of this machine" radio button on the Installation Scope message.
- Click the Next button.

SWIPE INSTALLATION

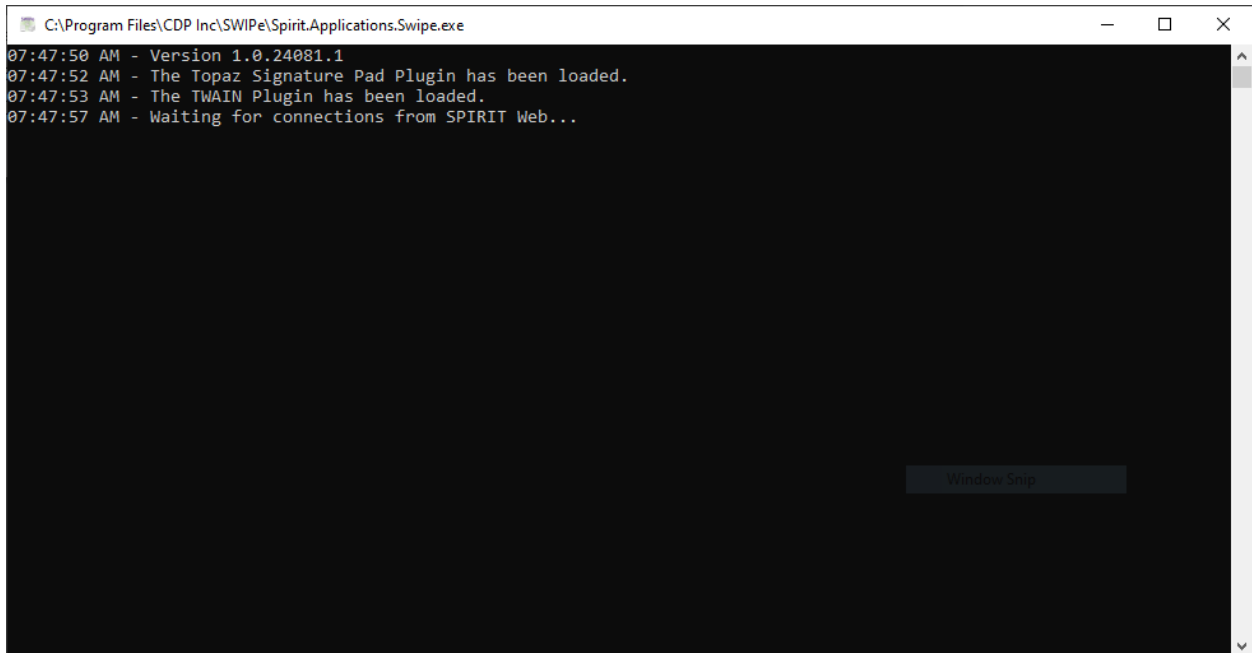


- Click the Next button on the Destination Folder message.
- A pop-up about making changes to the computer will display. Click Yes on this pop-up.



- Click the Finish button on the Completed Wizard message.

SWIPE INSTALLATION



```
C:\Program Files\CDP Inc\SWIPE\Spirit.Applications.Swipe.exe
07:47:50 AM - Version 1.0.24081.1
07:47:52 AM - The Topaz Signature Pad Plugin has been loaded.
07:47:53 AM - The TWAIN Plugin has been loaded.
07:47:57 AM - Waiting for connections from SPIRIT Web...
```

This is the screen that displays when SWIPE is first opened.

Once this displays, SWIPE is ready for use with WINNIE.

Minnesota Department of Health - WIC Program, 625 Robert St N, PO BOX 64975, ST PAUL MN 55164-0975; 1-800-657-3942, health.wic@state.mn.us, www.health.state.mn.us; to obtain this information in a different format, call: 1-800-657-3942.

This institution is an equal opportunity provider.